

SPRUCE WASH FEASIBILITY EXHIBIT
 6TH AVE TO CEDAR
 SHEET 3 OF 4

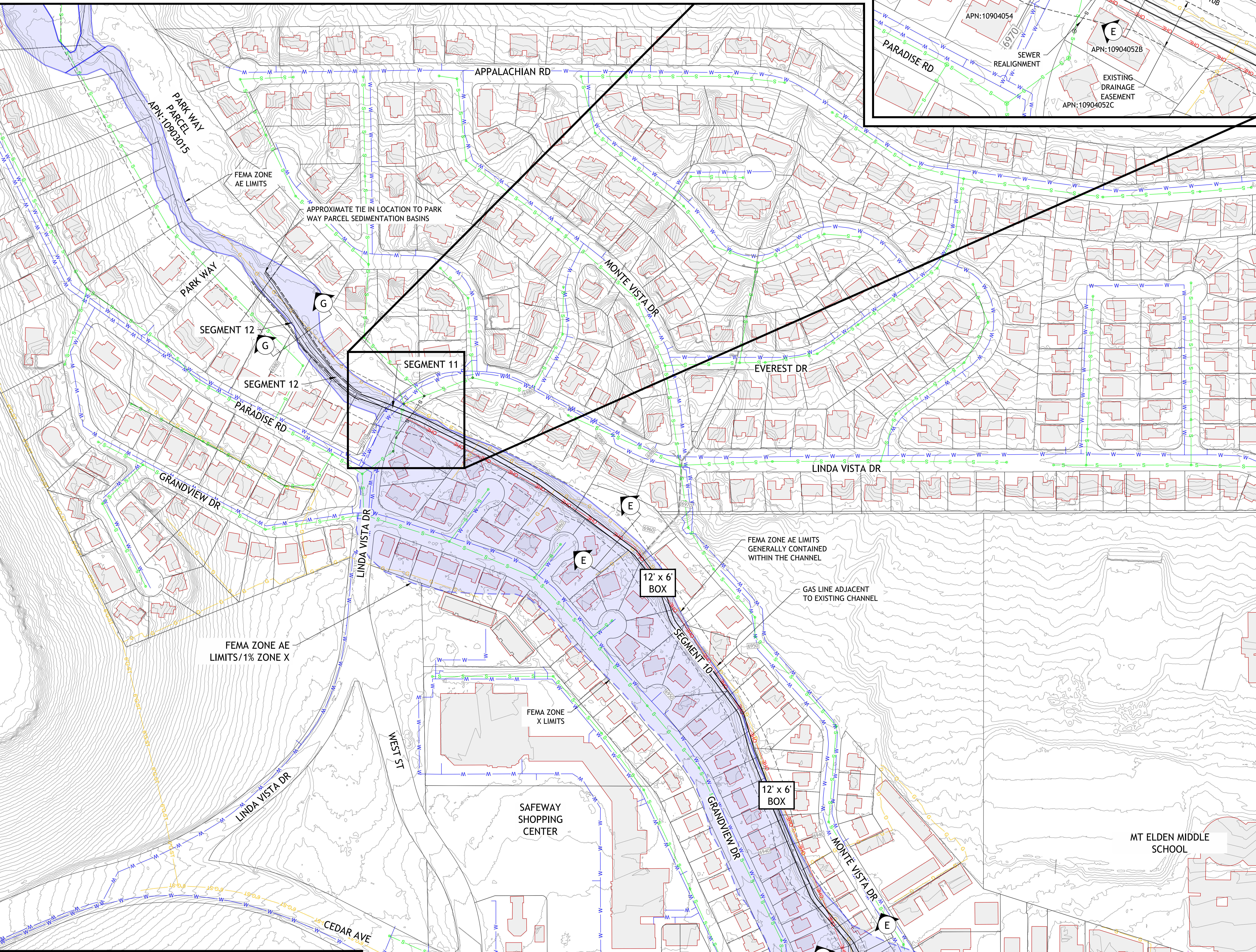
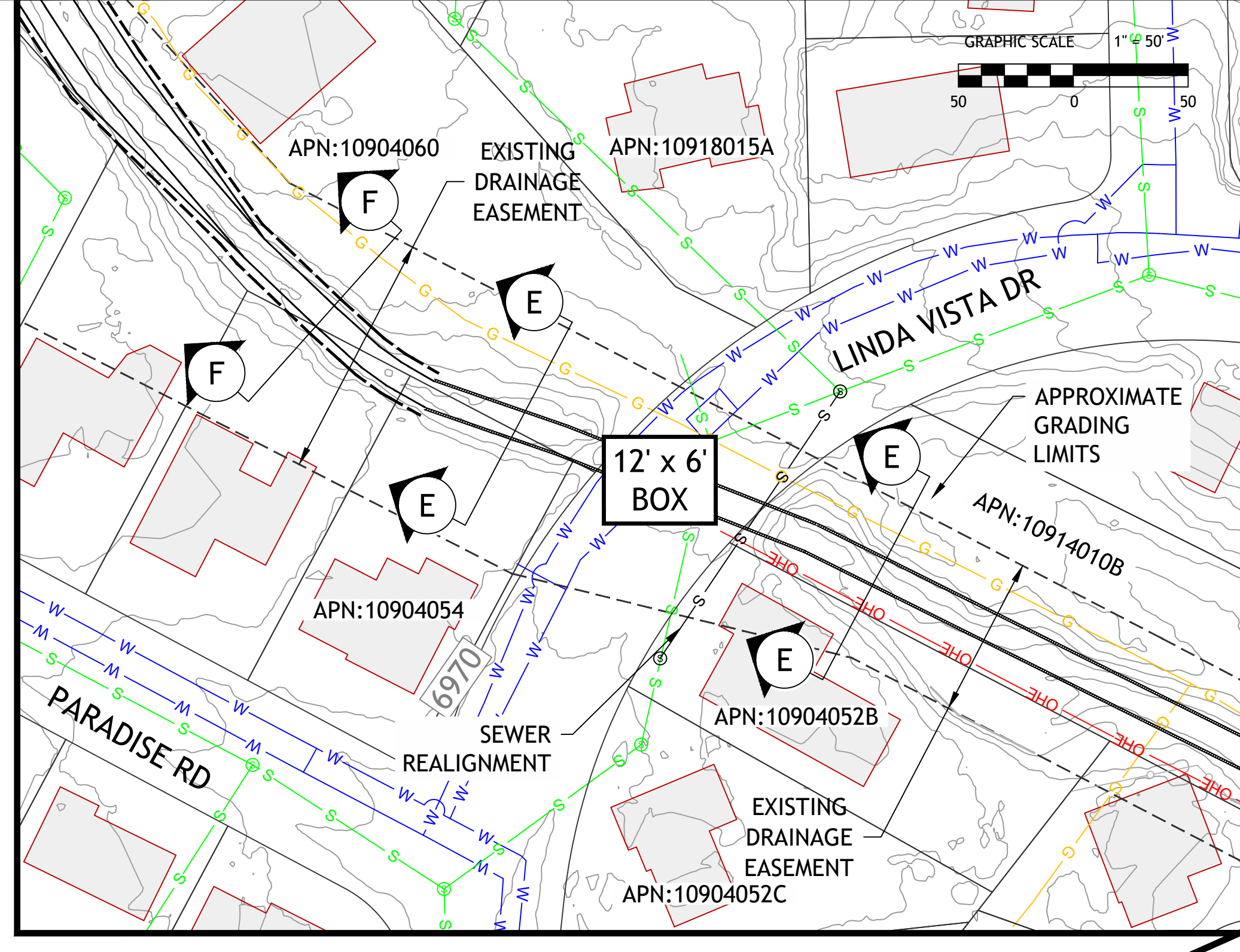
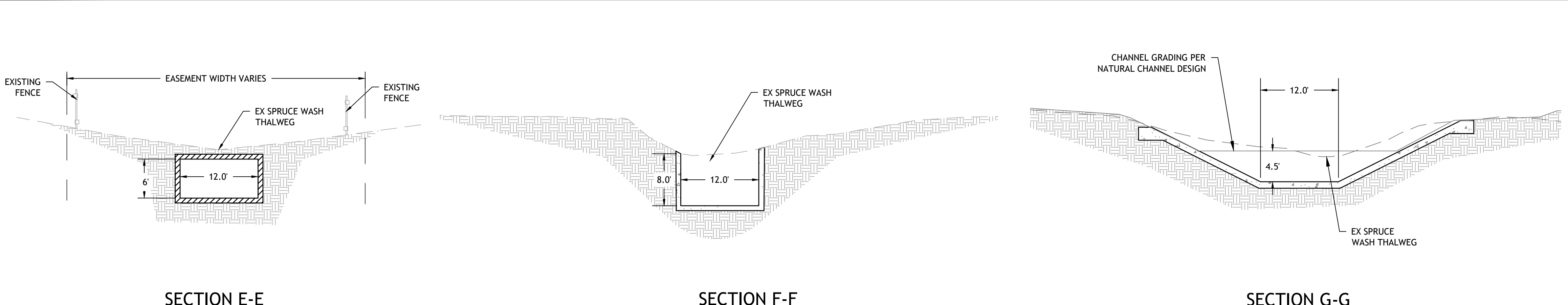


This exhibit shows general information and was prepared using GIS data furnished by the City of Flagstaff and Coconino County. Existing pipe sizes were provided by City staff based on record drawings or field measurements. This document depicts proposed infrastructure along Spruce Wash based on a feasibility level analysis. This document also depicts improvements in design by others and does not reflect final design of those improvements.

Peak ENGINEERING, INC.

Contour Interval = 2'

GRAPHIC SCALE 1" = 100'



SPRUCE WASH FEASIBILITY EXHIBIT
CEDAR TO LINDA VISTA
SHEET 4 OF 4

This exhibit shows general information and was prepared using GIS data furnished by the City of Flagstaff and Coconino County. Existing pipe sizes were provided by City staff based on record drawings or field measurements. This document depicts proposed infrastructure along Spruce Wash based on a feasibility level analysis. This document also depicts improvements in design by others and does not reflect final design of those improvements.

Contour Interval = 2'
 GRAPHIC SCALE 1" = 100'

Peak ENGINEERING, INC.

SEE SHEET 3