

Post-Wildfire Flooding Update

Feb 28, 2023





Objectives for Tonight

- Schultz Creek updates – Pipeline West
- Spruce Wash updates - Muesum

- Spring flood mitigation planning and update
- Council discussion and questions



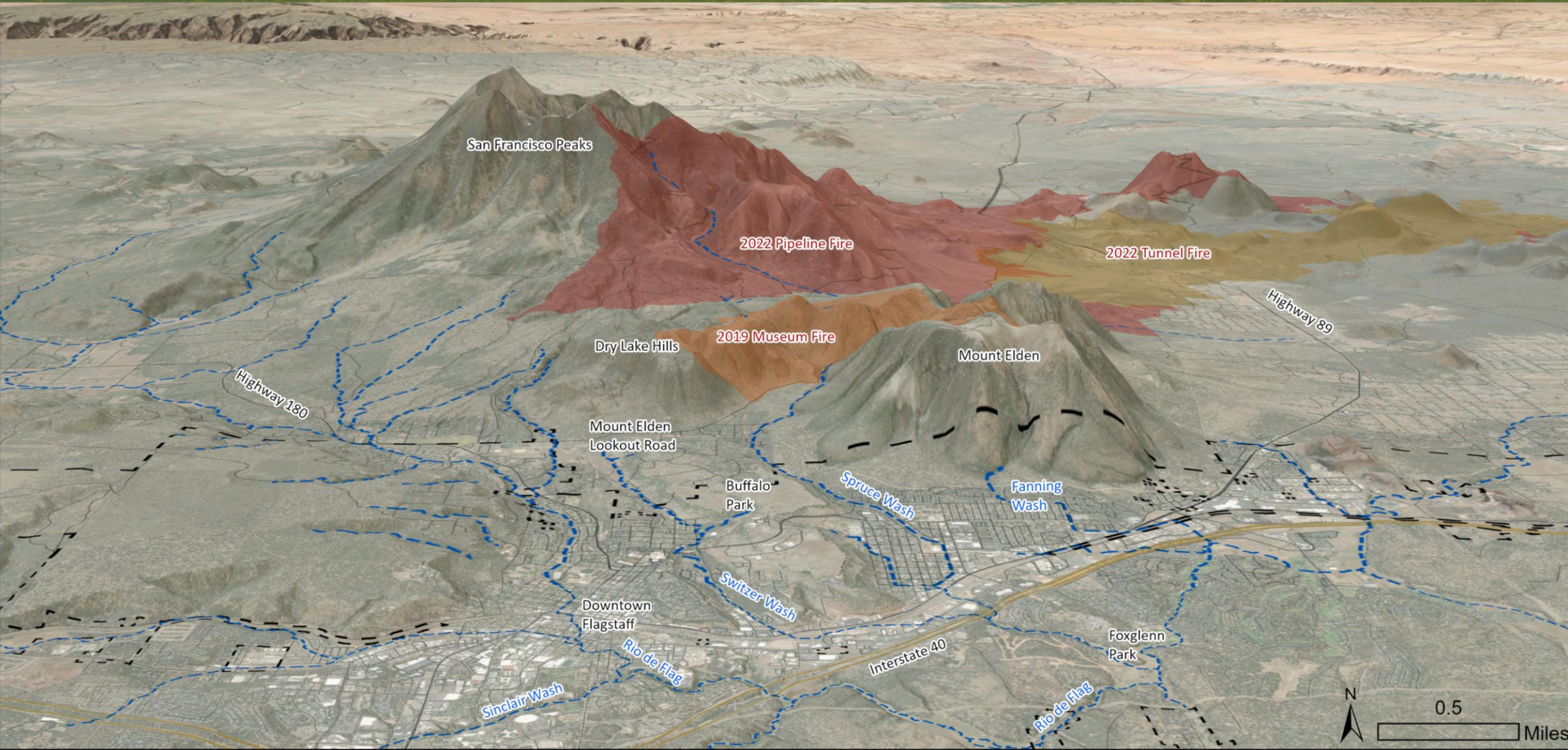
Fire/Flood Background

*Post wildfire flooding mitigation development is ongoing and some of the best work in the nation is occurring as quickly as possible. **This is not just a slogan:***

- 2022 Innovate CityWorks "excellence in departmental practice" nationwide award to the Water Services division for post-fire response and management.
- New research articles in the Journal of Geophysical Research, Frontiers in Earth Science, the Journal of Forestry, the Arizona Geological Survey, and others.
- Multiple workshops and presentations at international, national, and regional conferences, including the American Geophysical Union, Geological Society of America, Arizona Floodplain Management, StormCon, and Association of State Flood Plain Managers.
- In the last three years Flagstaff has been visited by the chief of the US Forest Service, congressional representation, Army Corps of Engineers leadership, and other high ranking federal staff and delegates.



Overall Map



San Francisco Peaks

2022 Pipeline Fire

2022 Tunnel Fire

2019 Museum Fire

Dry Lake Hills

Mount Elden

Highway 89

Highway 180

Mount Elden
Lookout Road

Buffalo
Park

Spruce Wash

Fanning
Wash

Downtown
Flagstaff

Switzer Wash

Interstate 40

Foxglenn
Park

Sinclair Wash

Rio de Flag

Rio de Flag



0.5

Miles

Spruce Wash

(2019 Museum Fire)





Spruce Wash



- New hydrology and modeling indicates that an elevated flood risk remains.
- Bond projects (\$26M) are moving quickly with design. Technical Advisory Committee continues to meet weekly and focus groups meet as needed.
- Geotech and survey work are being performed as weather allows.
- Construction Manager at Risk (CMAR) has been selected and is in negotiations with staff – award coming to Council soon.





Suite of projects

• Recommended Projects:

- Reconstruct Grandview
- The Wedge Detention Basin
- Upsize Linda Vista Crossing
- Improve Cedar to Linda Vista Channel
- Upsize Cedar Crossing
- Improve Dortha to Arroyo Seco Channel
- Construct Permanent Inlet at Arroyo Seco Townhomes





Construction Manager At-Risk Process

- A CMAR has been selected through a qualifications-based process. We are working through negotiations on a design services contract.
- We have retained three separate design consultants for the suite of projects.
- Geotech and survey consultants have been retained, their crews will be out in March to start work.
- Our CMAR will retain a public relations firm -
Communications will include community meetings, project-specific mailers, e-newsletters, website updates, bulletin boards, banners, and more.





Park Way Basin



- County project is currently in procurement and working toward a spring delivery.
- Final scoping is underway. Plans and construction approach will be out soon.
- City/County intergovernmental agreement is in development.
- Natural Resources Conservation Service (NRCS) funding is secured and programmed for expense by June 2023.
- Project boundaries remain on city parcel and utility work may be starting soon, weather dependent.



Schultz Creek

(2022 Pipeline Fire)





Schultz Creek Project Delivery

- Mitigating the flood threat for Stevanna Way, Coconino Estates, downtown, and Southside as a result of the Pipeline Fire.
 - Detention Basins – Complete and functioning
 - Basins to Hwy 180 (two projects)
 - Hwy 180 Crossing (30% design, TAC)
 - Hwy 180 to Rio (30% design, TAC)
 - Frances Short Pond (on hold due to snowpack)



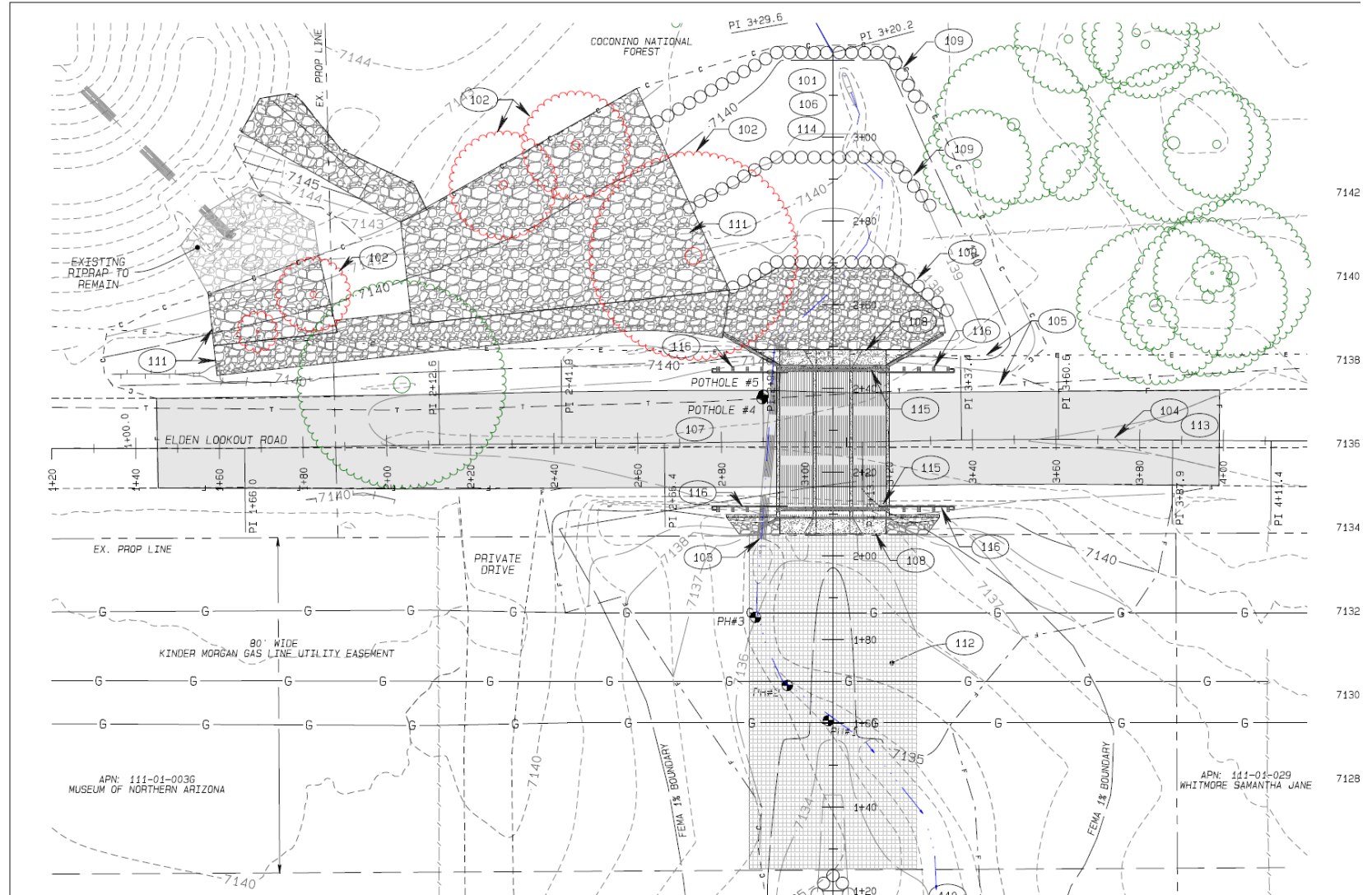
Schultz Creek channel

- Emergency Watershed Protection (EWP) funding is still pending state appropriations, City match funded through new Stormwater rate or Dept. Of Forestry and Fire Management match.
- County project on Elden Lookout Road moving through design (60% design)
- **Both projects are designed to reduce sediment and downstream debris impacts in Coconino Estates, downtown, and the Southside neighborhoods**



County – Elden Lookout Road

- Designed to convey the 2" in 45-minute post-fire storm under Elden Lookout Road.
- Will reduce scour and sediment transport to the downstream communities.
- At 60% design, coordinated review between CC and COF Stormwater
- Delivered by CC Public Works





Schultz Creek at Hwy 180

- 30% design, moving quickly to 60% and 90%
- Technical advisory focus group created





Frances Short Pond dredging

- On hold due to snowpack and expected spring runoff
- Will assess in the coming month





Neighborhood mitigations

- Short-term mitigations update in April
 - Assessing flood risk model
 - Flood alert thresholds are being evaluated, may be adjusted due to Schultz Basins and seasonal rain data collected
- Mitigation funded by stormwater rate adjustment
 - Sandbags, barrier purchase
 - Engineering assessments for private property
 - Individual assistance for elderly and disabled
 - Call center support – 928-213-2102 Monday to Friday business hours

Discussion

