

Spruce Wash Community Meeting

November 2, 2023





Objectives for tonight

- Infrastructure project updates
 - Milestones
 - Construction
- Review modeling
- Short and longer-term plan for mitigations
- Discussion and general questions



Infrastructure Projects






Suite of projects



Key Flood Projects

1. Grandview Drive Reconstruction
2. "The Wedge" Detention Basin
3. Linda Vista Drive Crossing
4. Cedar Avenue to Linda Vista Drive Channel
5. Cedar Avenue Crossing
6. Arroyo Seco Drive to Dortha Avenue Channel
7. Arroyo Seco Drive Inlet
8. Killip Basins Outlet
9. Killip Basins Inlet
10. Park Way Basins

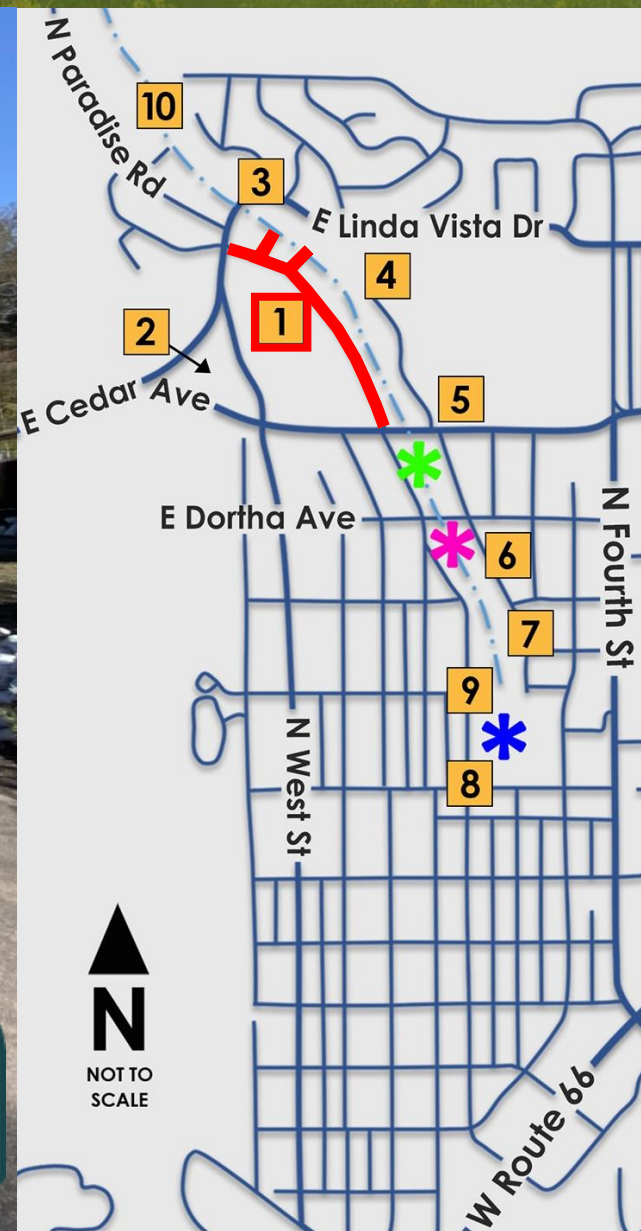
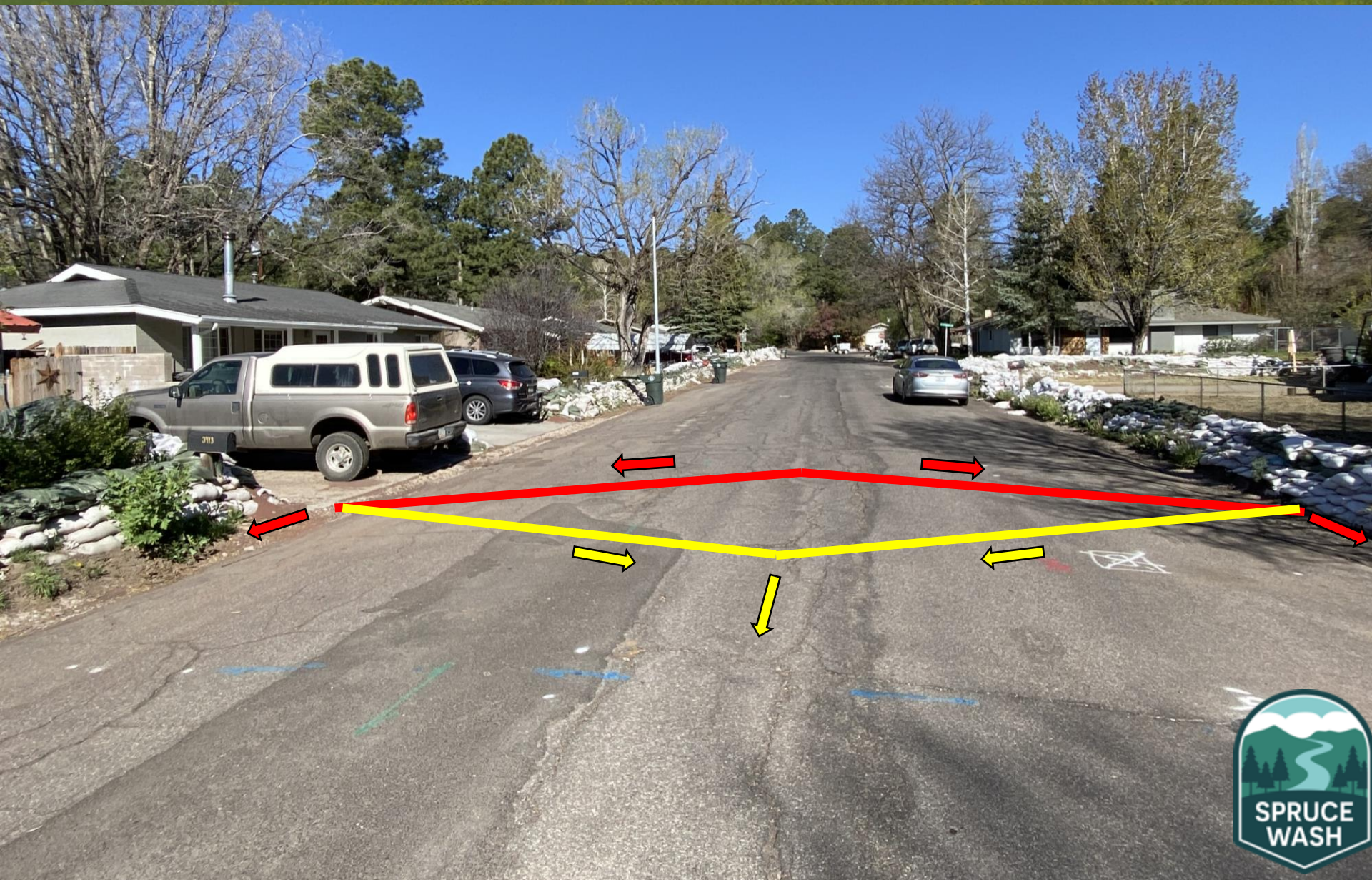
Completed Key Flood Projects

-  Spruce Wash Channel Improvements Project (Cedar Avenue to Dortha Avenue)
-  Spruce Wash Channel Improvements Project (Dortha Avenue Inlet)
-  Killip School Regional Detention Basins Project





Grandview Drive Reconstruction



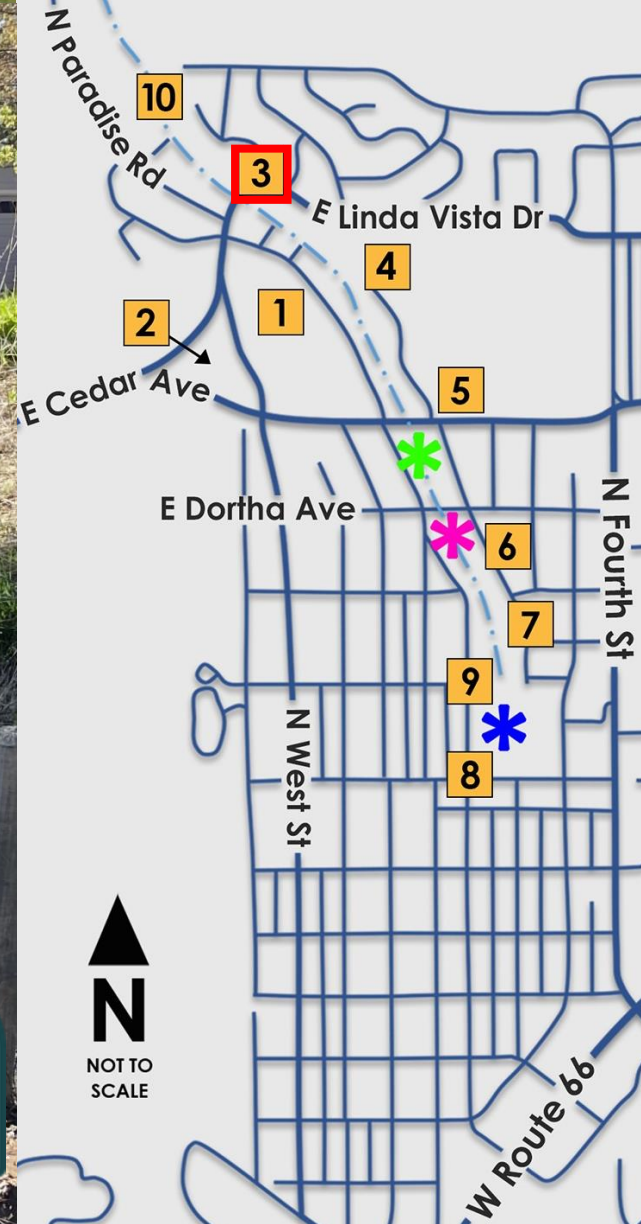


The Wedge Detention Basin



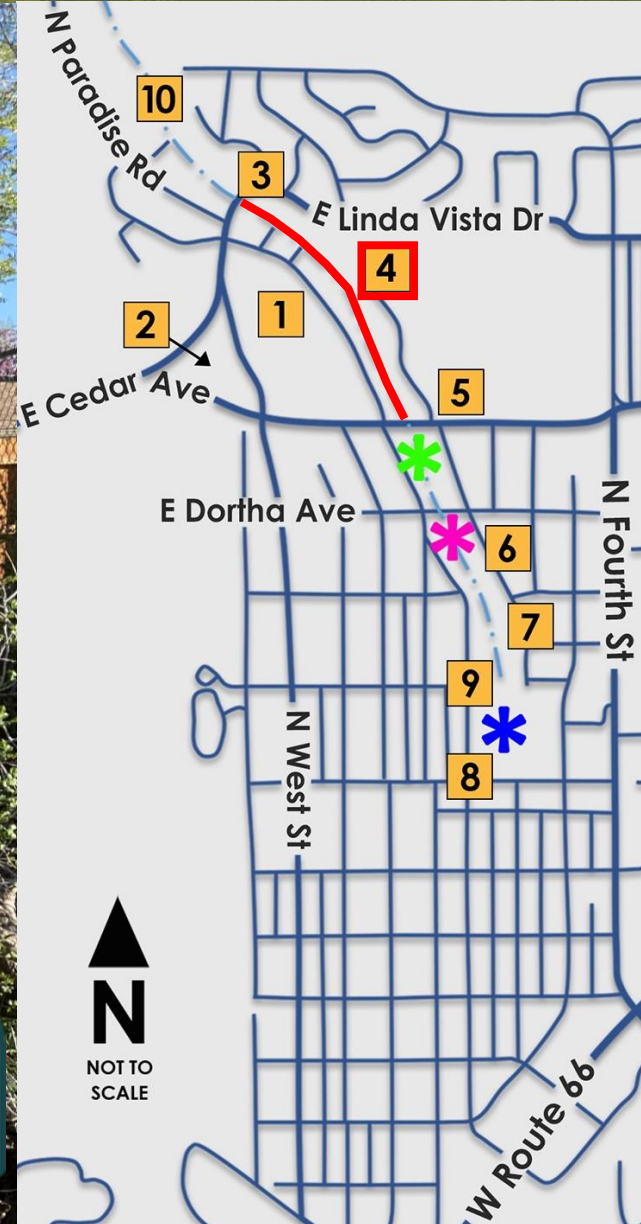


Linda Vista Drive Crossing



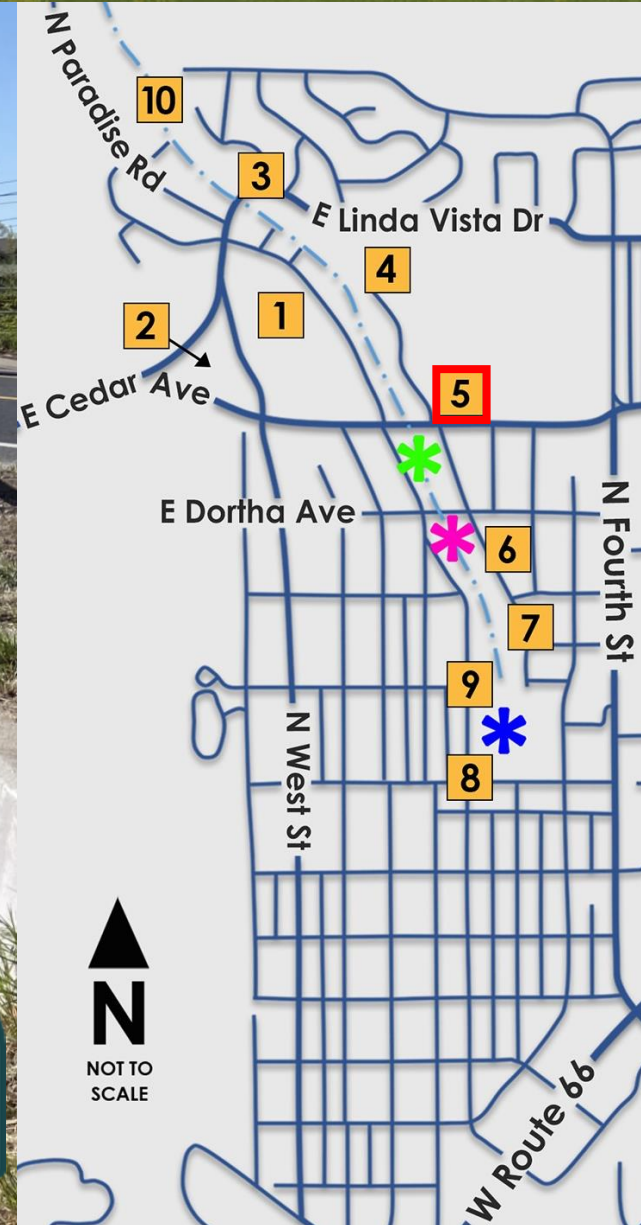


Cedar Avenue to Linda Vista Drive





Cedar Avenue Crossing





Arroyo Seco Drive to Dortha Avenue



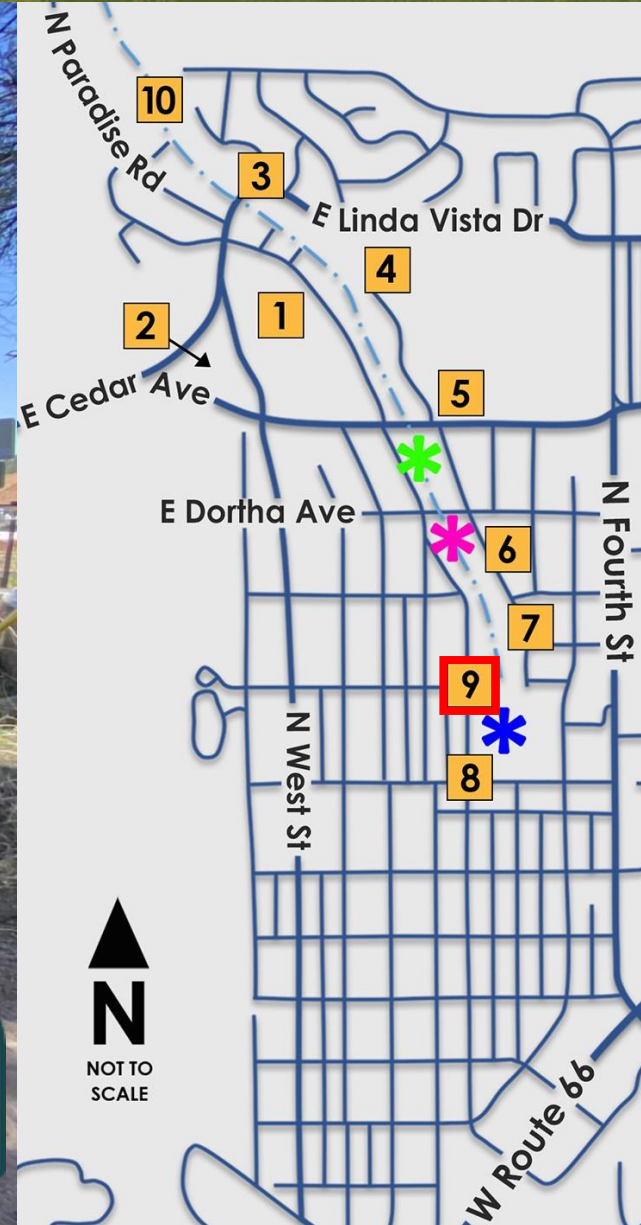


Arroyo Seco Drive Inlet



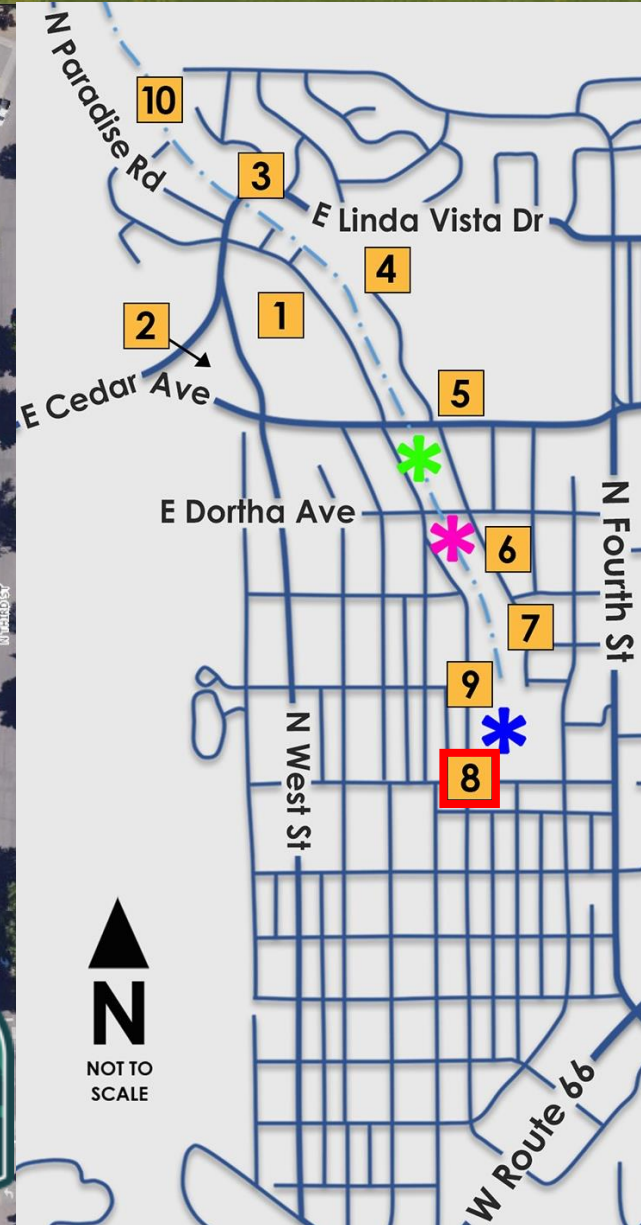


Killip Basins Inlet





Killip Basins Outlet

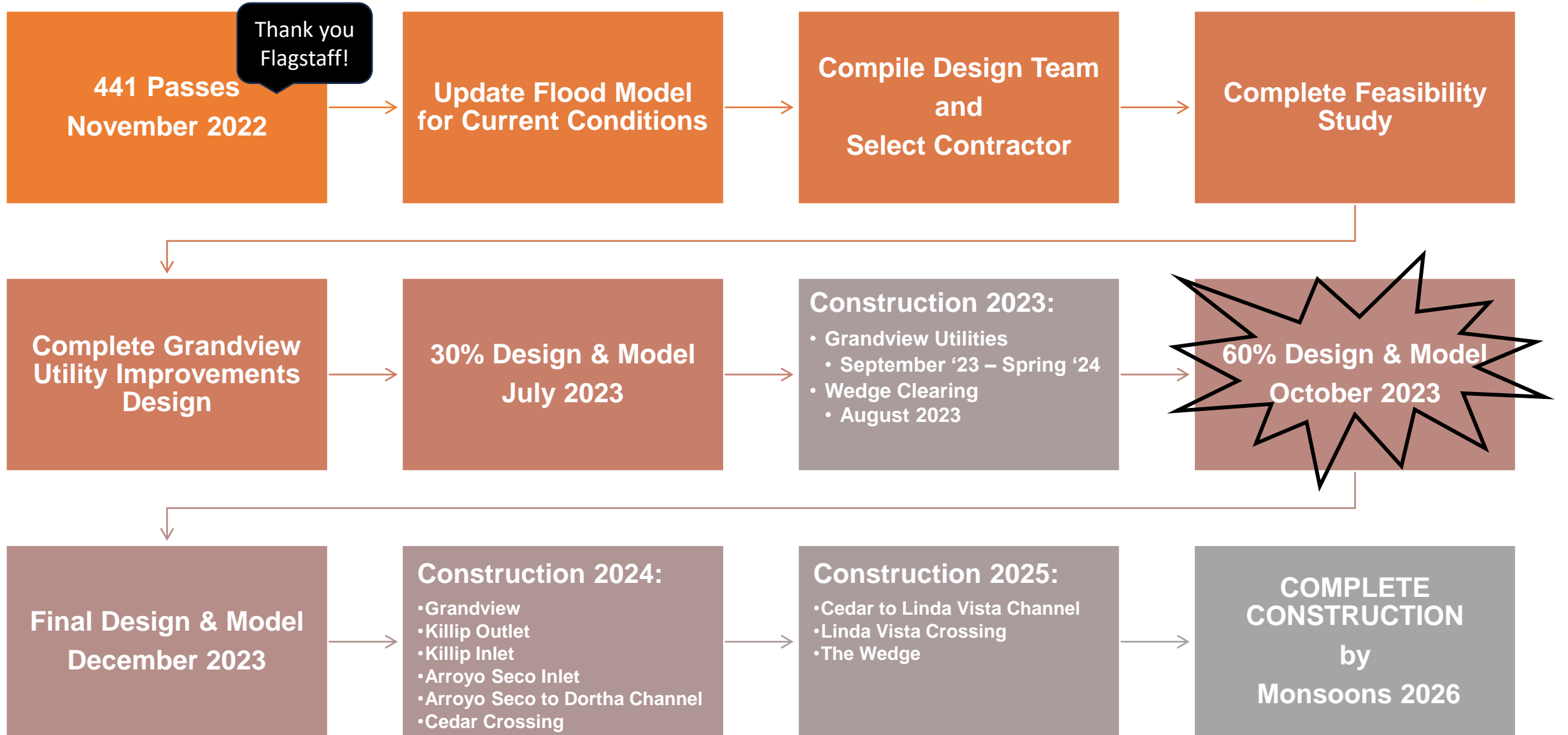


Milestones





Milestones



Construction





Grandview Utilities Construction

- Started September 5, 2023
- Complete Spring 2024
- First Sewer Improvements
- Second Water Improvements
- Access Maintained
- Snow Removal By Contractor
- No Winter Parking Ordinance





Park Way Basins Phase II Construction



- Started October 23, 2023
- Complete December 31, 2023
- Series of 3 Sediment Basins
- 1st Basin Completed Summer 2023
- Flood Control District Project
- Kinney Construction Services
- Alternative Forest Access Identified

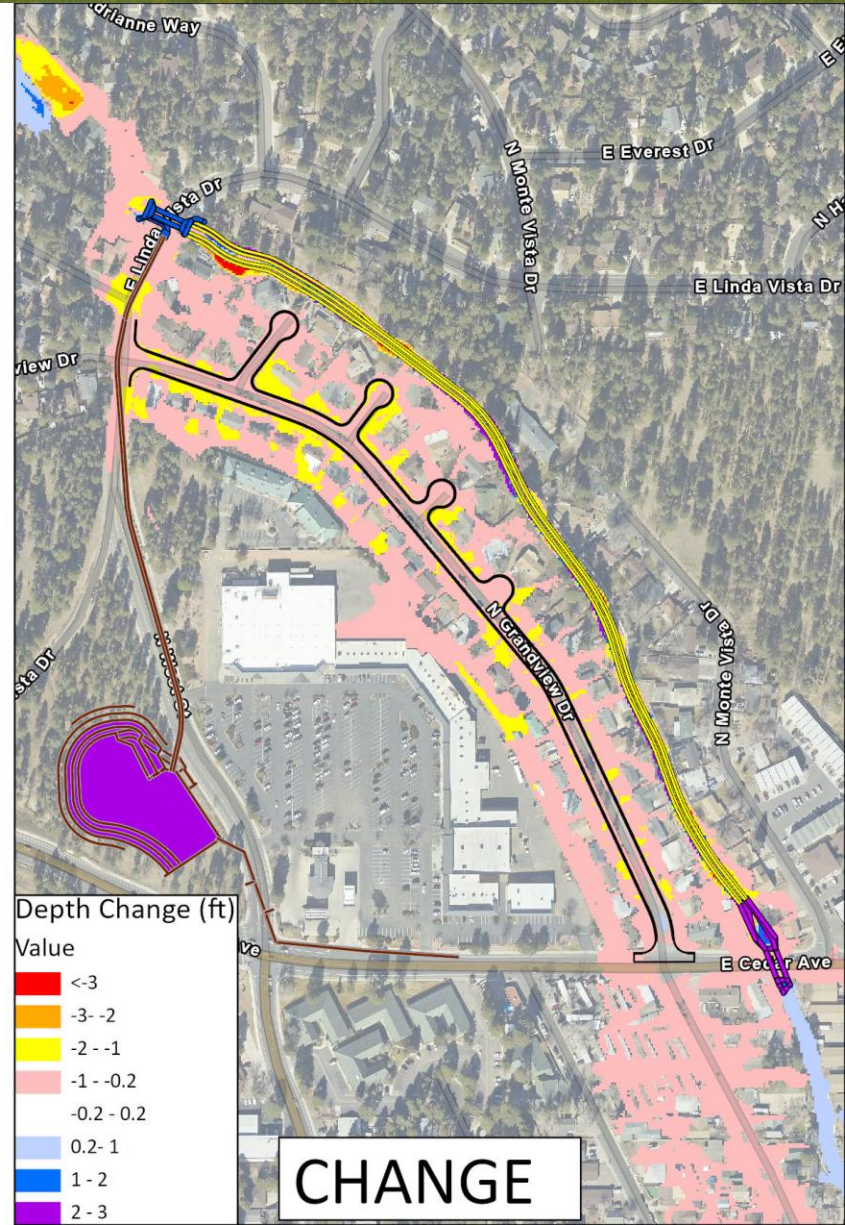
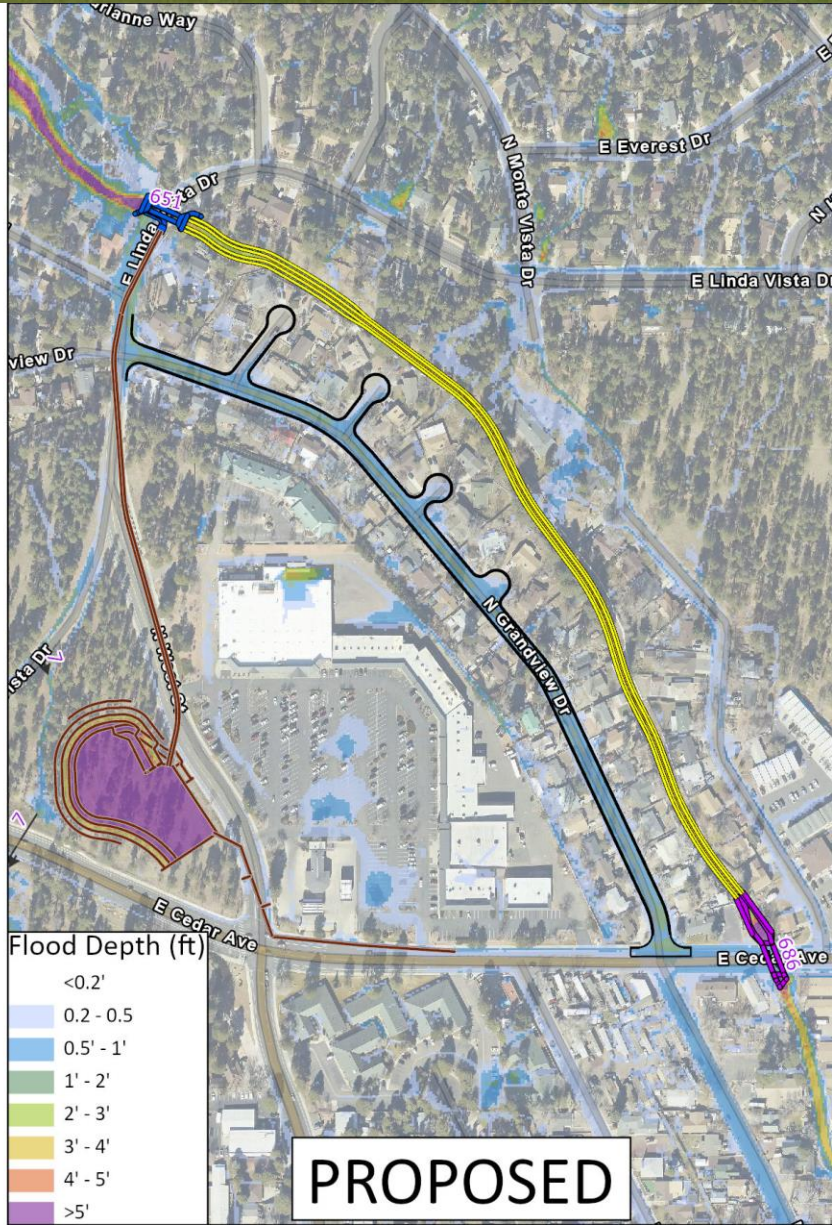
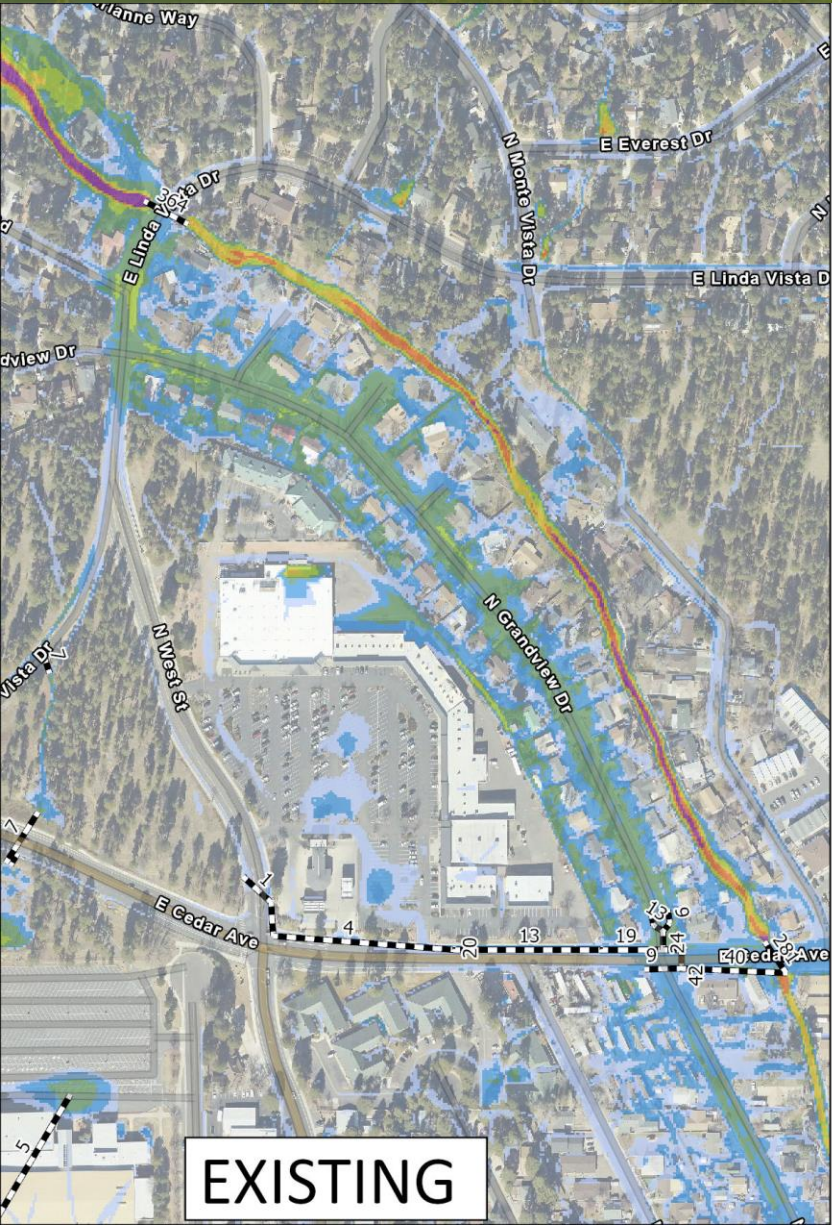


Modeling



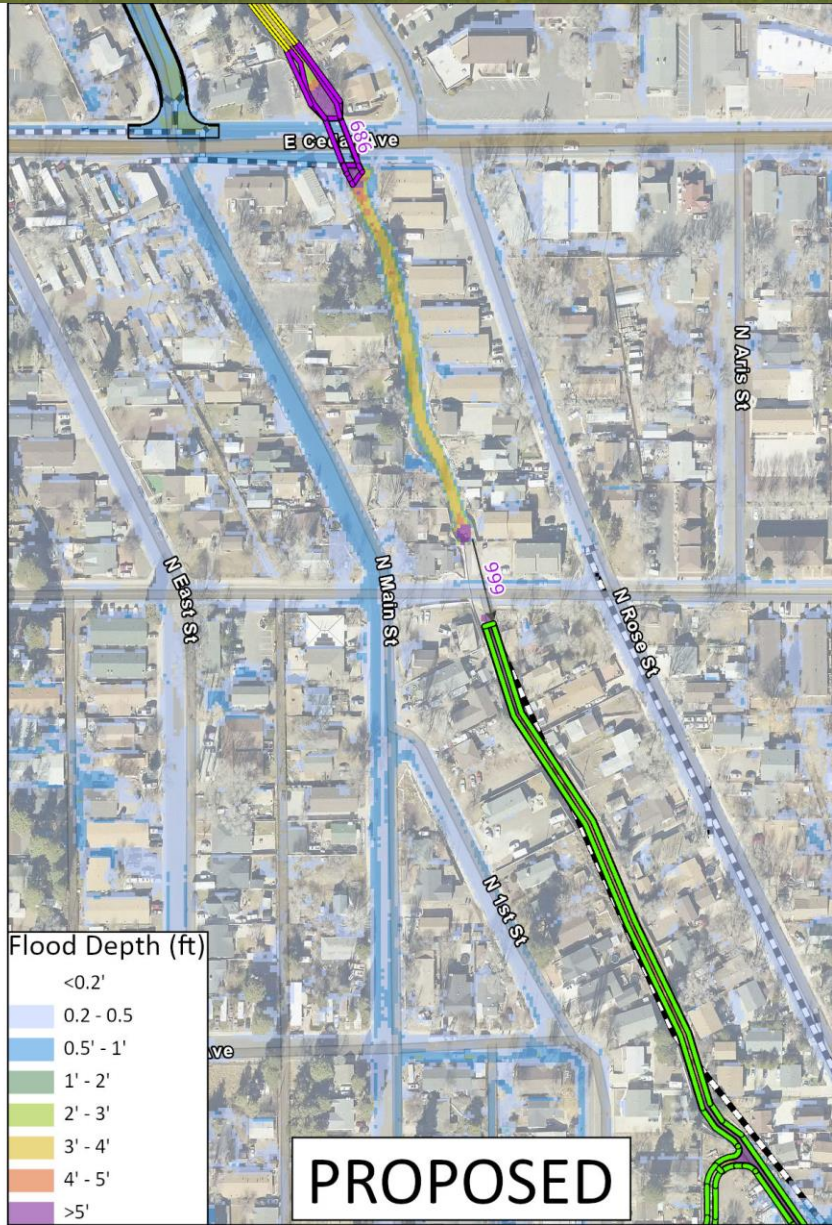
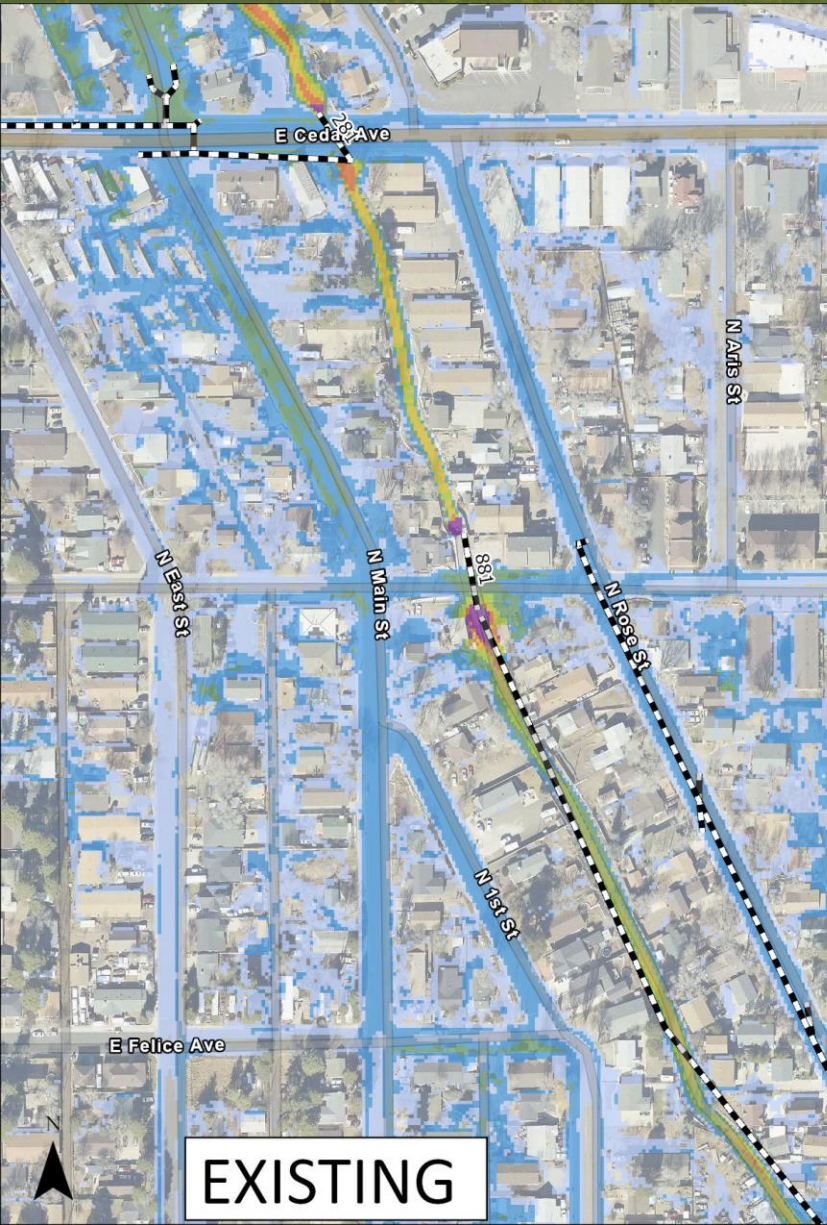


Draft Modeling Results - 2" Storm





Draft Modeling Results - 2" Storm



Flood Depth (ft)

<0.2'
0.2 - 0.5
0.5' - 1'
1' - 2'
2' - 3'
3' - 4'
4' - 5'
>5'

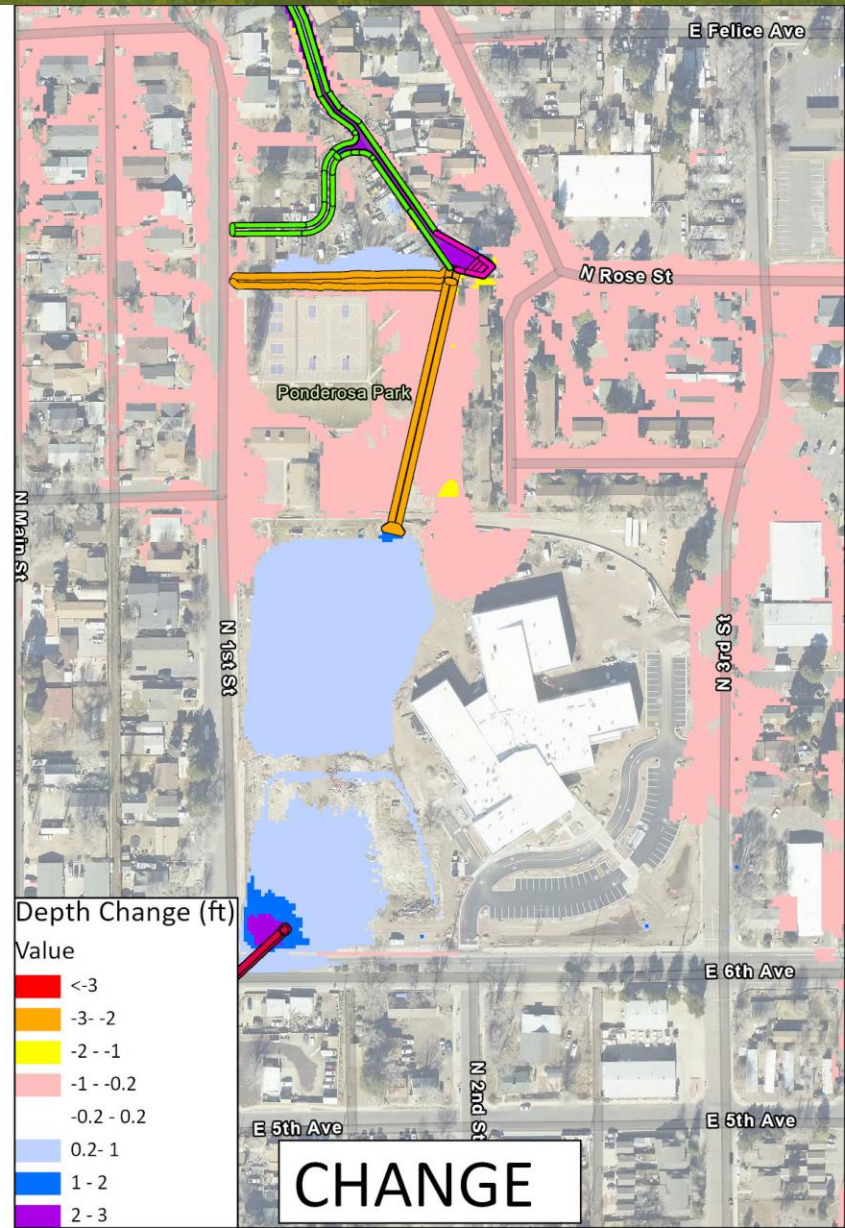
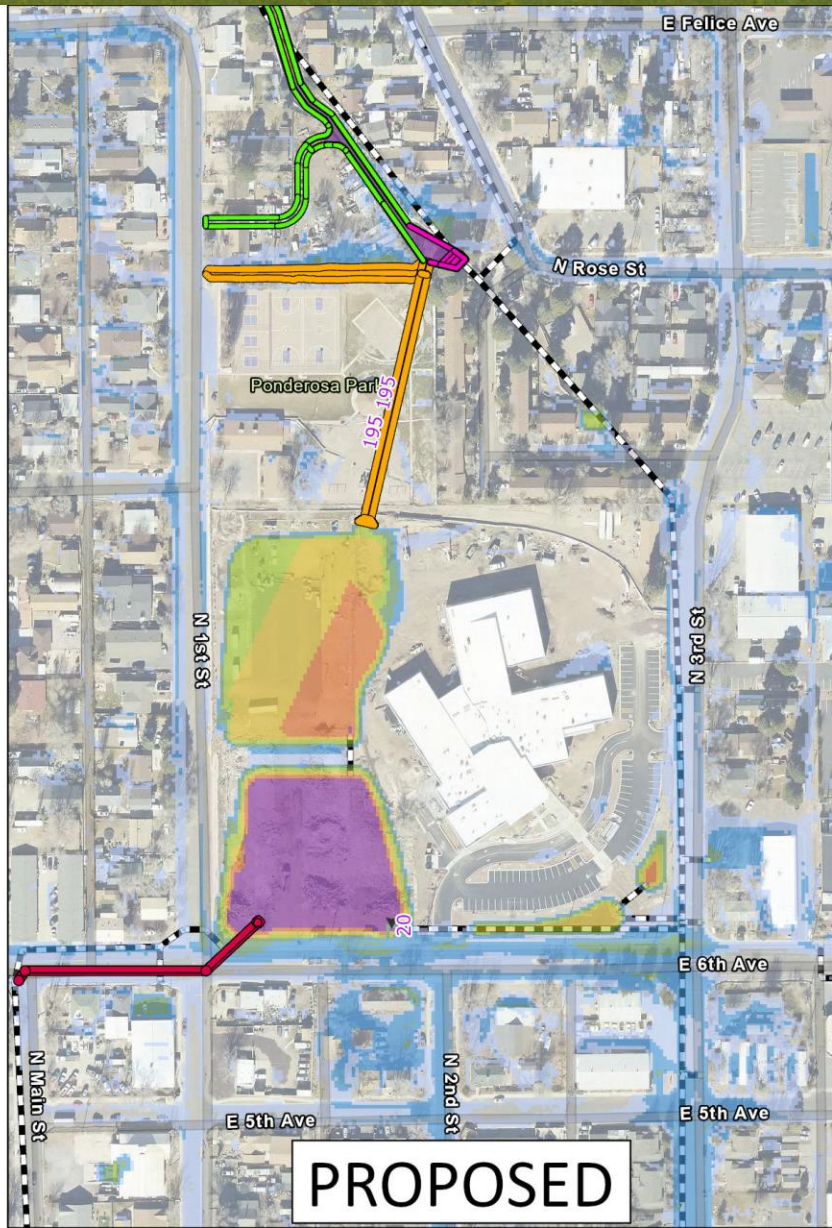
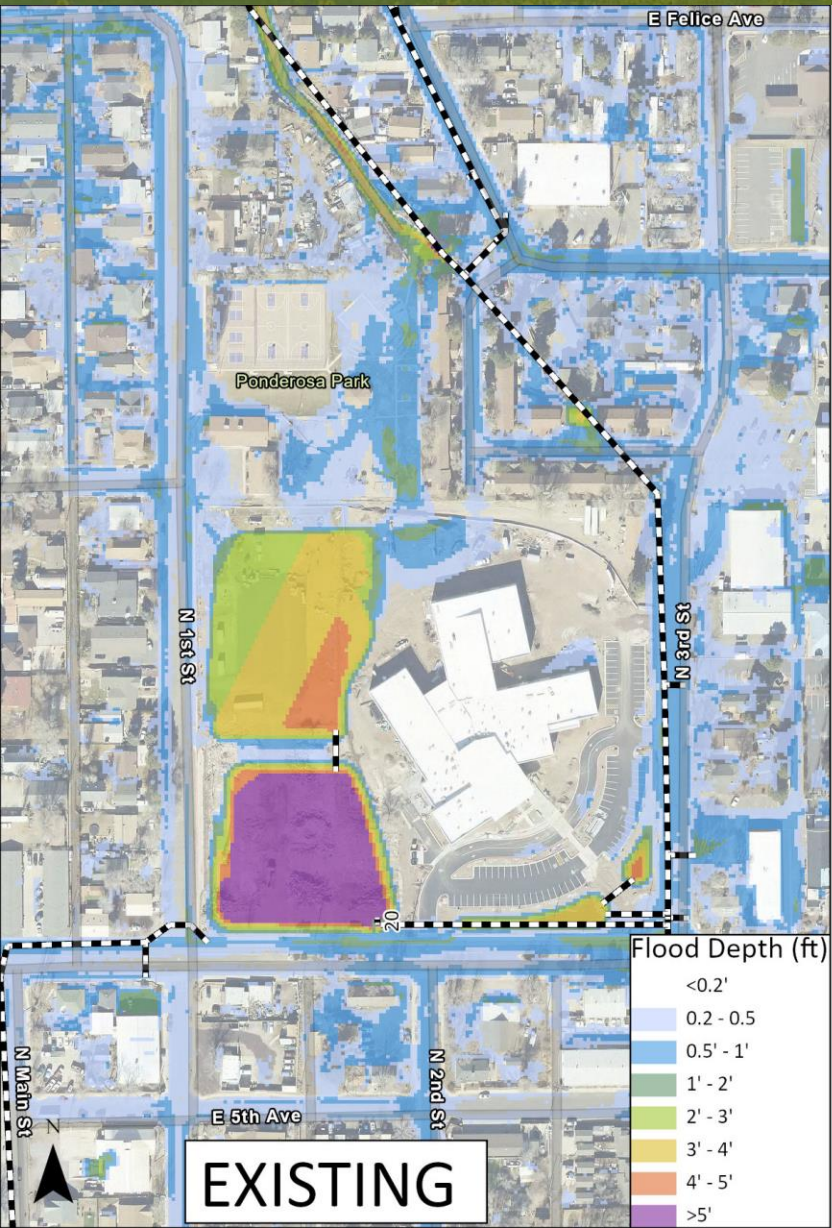
Depth Change (ft)

Value

<-3
-3 - -2
-2 - -1
-1 - -0.2
-0.2 - 0.2
0.2 - 1
1 - 2
2 - 3



Draft Modeling Results - 2" Storm



Mitigations





Short-term mitigations

- Plan for near future/ winter
 - The contractor will be removing or adjusting some sandbags on Grandview as necessary for both utility connections and street improvement.
 - No changes to sandbags will be made outside of Grandview.
 - Residents in the Spruce Wash should keep mitigations in place at this time.



Short-term mitigations

- Longer-term plan
 - Based on what improvements are shown by future modeling, the City and its contractor will work with residents to salvage or replace sandbags to mitigate to a 2inch/ 45-minute event until the entire suite of improvements is complete.
 - Once all improvements are complete, individual property owners can assess whether they want to remove sandbags based on modeling

Questions?

