

Flood Mitigation Updates

March 29, 2022





Agenda



- Updates on
 - Feasibility Study
 - Cedar to Dortha and Dortha Inlet
 - Killip School Regional Detention Basins
 - Killip Inlet at Ponderosa Park
 - Ponderosa Park barriers
 - Siren system
 - 2022 Sandbag refresh
 - Park Way Sediment Basins
 - Communications

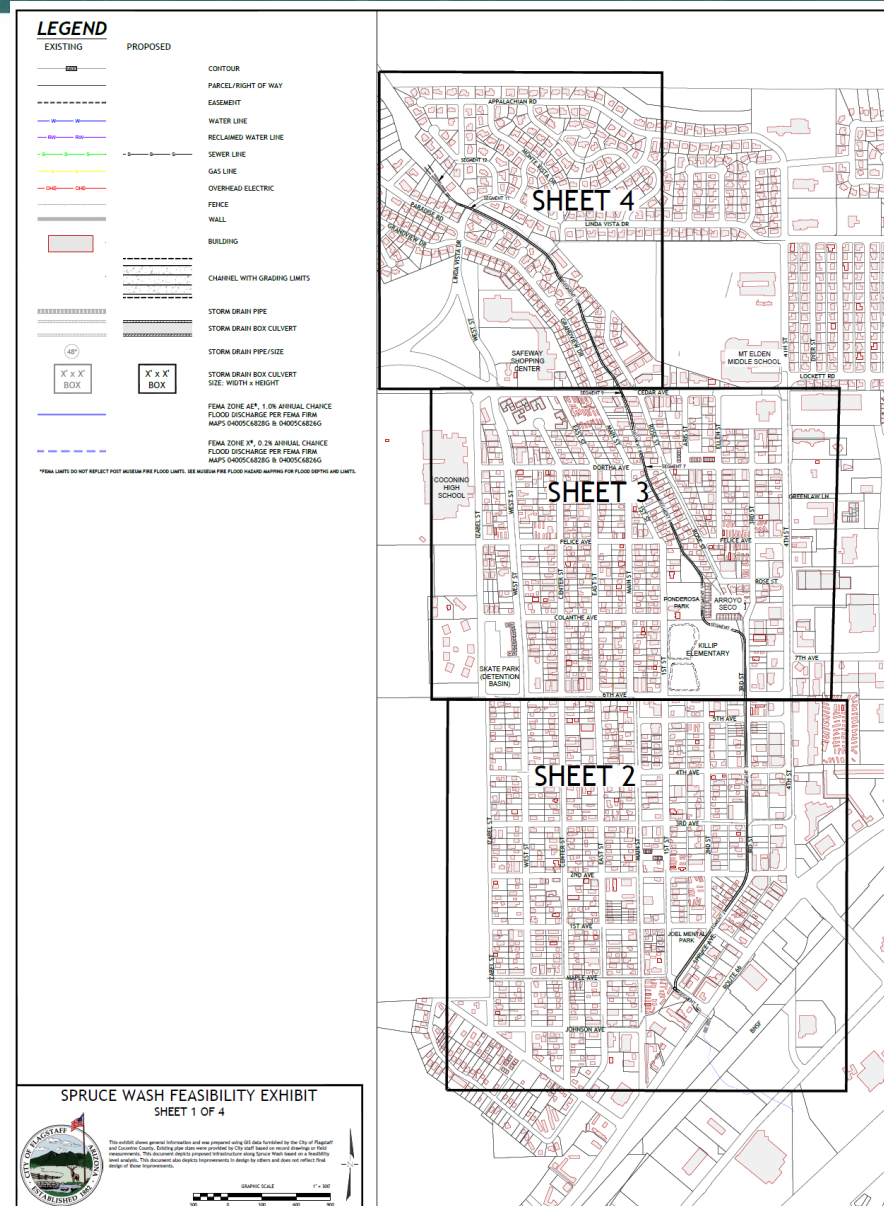




Feasibility Study



- The final feasibility technical memo and exhibits were delivered to the City
- 15% designs submitted to City for review
- Opinion of construction cost in review





Cedar to Dortha Channel and Inlet

- **Project Scope:** Channel improvements for capacity and stability, Dortha Avenue undercrossing reconstruction for increased capacity
- **Construction Estimate:** \$2,600,000
- **Schedule:** Completion prior to Monsoons 2022 (July 15 with critical infrastructure complete by June 15)
- **Current activities:**
 - Construction began March 21
 - Construction contract – April 19 Council consideration
 - Property acquisition





Killip School Regional Detention Basins



- Work is advancing nicely, good weather, clear direction and project coordination is paying off.
- Final weir design, outlets and finish grade are nearly complete and will be delivered to FUSD and the contractor.
- Finish work scope and proportionate cost share discussions are continuing for total costs.





Killip School Regional Detention Basins





Killip Inlet at Ponderosa Park

- Engineering team is working on the conveyance infrastructure needed north of the Killip Detention Basins.
- Concept design is being developed
- Next logical construction project to follow Killip Detention Basin delivery. Funding guidance and timing is still being received.





Ponderosa Park barriers

- Stormwater working with Parks and Ponderosa Head Start on moving barriers to allow for Head Start playground re-opening and for interim inlet condition for Killip Regional Detention Basins.
- Stormwater purchased 210 linear feet of concrete barrier.
- Coordination with contactors is underway to install any emergency measures using the "Killip" unused barrier.

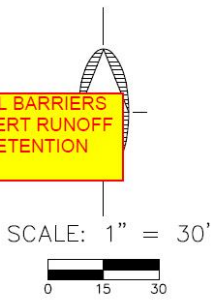
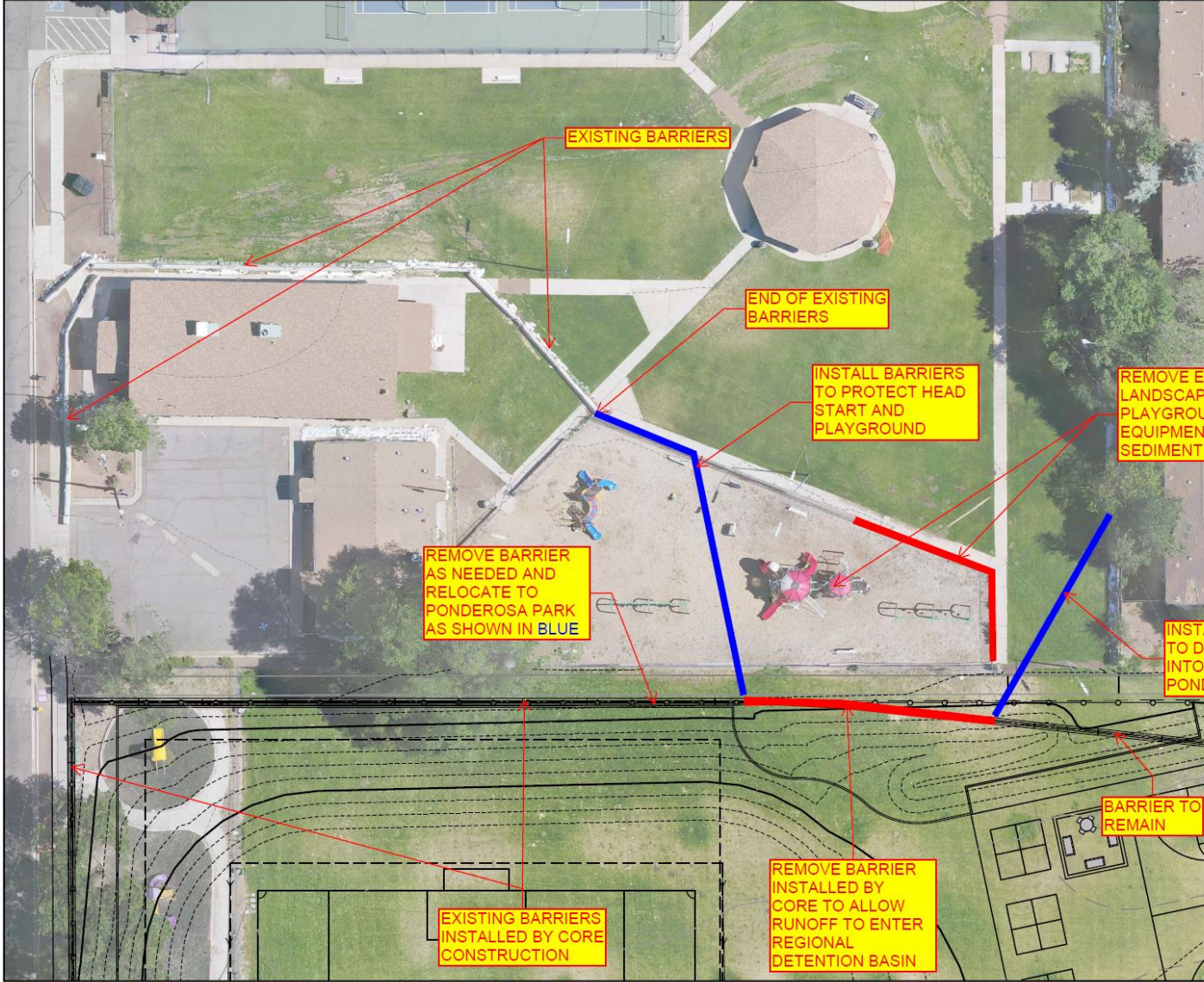




Ponderosa Park barriers



FILE: P:\2020\20063\DRAWINGS\EXHIBITS\PONDEROSA_PARK_BARRIER_EXHIBIT.DWG SIRWIN PLOTTED: Jan 11, 2022--6:29am



SCALE: 1" = 30'

PRELIMINARY
NOT FOR CONSTRUCTION,
BIDDING OR RECORDING

PROJECT NO.: 20063 DATE: 08/22 SCALE: AS SHOWN DRAWN: SJI DESIGN: CHECKED:	KILLIP ELEMENTARY SCHOOL PONDEROSA PARK BARRIER EXHIBIT	SHEET 1 of 1
75 Keller Place Scottsdale, AZ 85258 928.282.2058 fax www.swi-arizona.com	SWI Shepherd Wesnitzen, Inc.	
Copyright © 2011 by the City of Flagstaff. All rights reserved. No part of this drawing may be reproduced without the prior written consent of the City of Flagstaff.	ARIZONA Call SJI at: dick@shepherd.com	





Siren system

- 4 Siren locations for identified
 - Linda Vista
 - Cedar Ave
 - Ponderosa Park
 - Joe Montalvo Park
- County EM working on the radio system and interface with the County Emergency Notification system.





Spring 2022 sandbag refresh

- IGA discussions continue with the County Flood Control District (FCD).
- City and FCD are meeting to build out the strategic refresh plan for 2022.
- Goals:
 - Joint sandbag refresh public education
 - Have sandbags readily available for the Museum Flood Area residents.
 - Support residents with Access and Functional Needs (AFN).
 - Establish Volunteer Day events





Park Way Sediment Basins



- City and FCD continue to work through design process
- Sediment reduction is a primary goal
- Land acquisitions and permitting underway
- Higher priority project due to funding and impact to downstream infrastructure





Communications



- **Outputs**

- E-Newsletter released on 3/18
- Cedar to Dortha project flyer for door-to-door distribution
- Killip project video

- **In production**

- Feasibility Study overview

- **Future**

- 2022 monsoon season prep



Council Discussion

