

Post-Wildfire Flooding Update

April 25, 2023





Objectives for tonight



- Spruce Wash updates
- Schultz Creek updates
- Snowmelt runoff update
- Monsoon (summer) preparation
- Discussion and questions



Spruce Wash

(2019 Museum Fire)



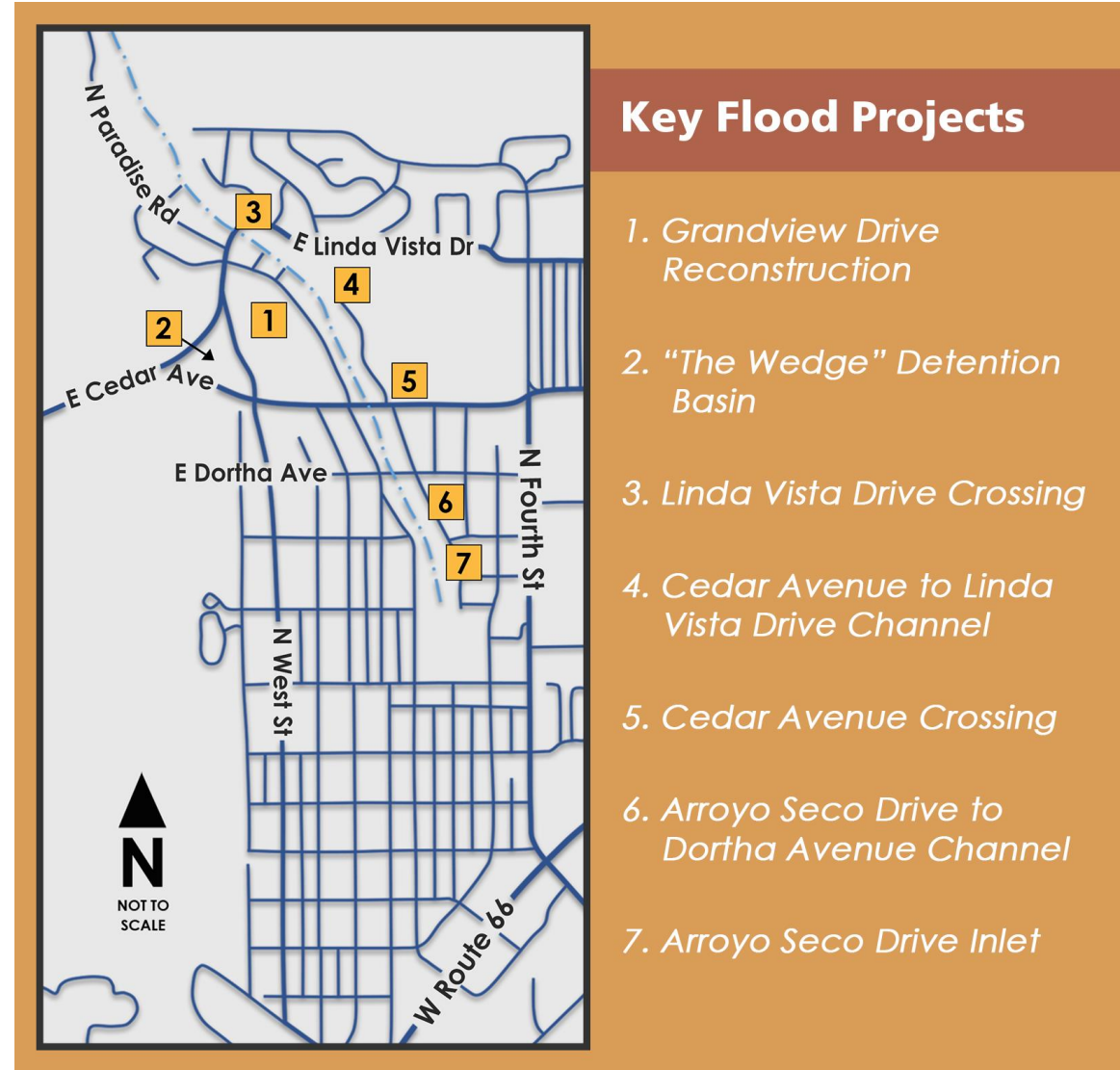


Suite of projects update

- Projects in Design



- Grandview
- The Wedge Detention Basin
- Linda Vista Crossing
- Cedar to Linda Vista Channel
- Cedar Crossing
- Arroyo Seco to Dortha Channel
- Arroyo Seco Inlet





Project Team



- Eagle Mountain Construction selected through a qualifications-based process as the Construction Manager at Risk to deliver the suite of projects
- Survey
 - Shephard Wesnitzer
- Geotech
 - Speedie and Associates
- Design
 - JE Fuller, Peak, Shephard Wesnitzer, Woodson





Project delivery schedule

- Guaranteed Maximum Price (GMP) #1 on July 3 – Grandview Utility Relocates – Construction will start post monsoon.
- Final plans for all projects completed by December 2023
- GMP #2 in February of 2024.
- Construction would start in the spring of 2024 and would continue through the fall of 2025.





Park Way Basin



- Tree removal has been completed
- Earth haul off started this week
- The project will be completed by June 30
- Tentatively planning to construct Phase 2 in the Fall



Schultz Creek

(2022 Pipeline Fire)





Schultz Creek channel stabilization



- Working on federal environmental and cultural clearances
- New channel survey is needed due to 2023 erosion and scour
- Procurement of design and survey underway
- NRCS EWP grant is for 220 days, project needs to be completed by October





Schultz Creek at Highway 180

- Damage to the ADOT section of culvert/pipe
- Impacts to Fire Station 5, Highway 180, and risk to a 20" water main.
- Emergency repair and mitigation underway, fast moving project





Schultz Creek at Hwy 180





Schultz Creek at Hwy 180

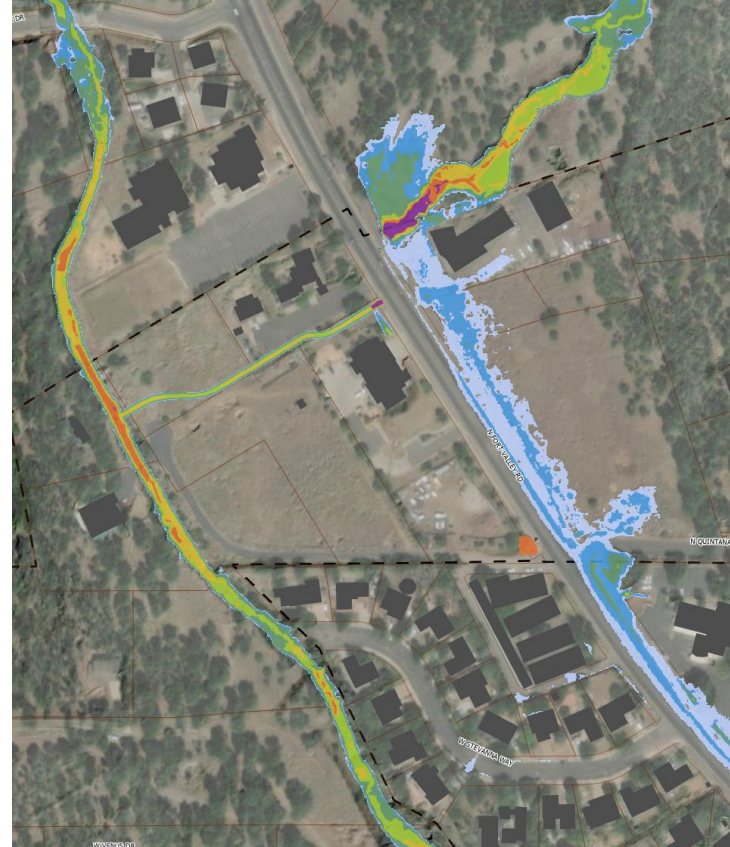
Flood Modeling is dynamic and updated as physical changes happen

Schultz Basins

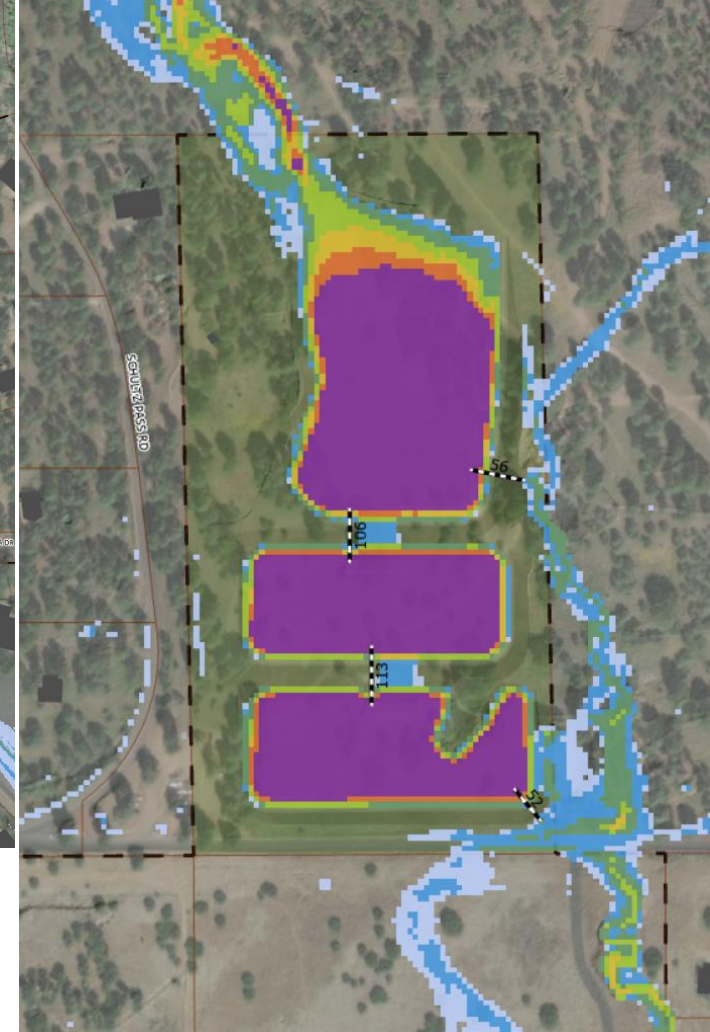
- Significant modeling variability depending on sedimentation from the watershed

Highway 180 Crossing

- Multiple Iterations
- NAI Analysis for function and downstream impacts



*2" in 45 min storm with Schultz Basins



Spring Runoff



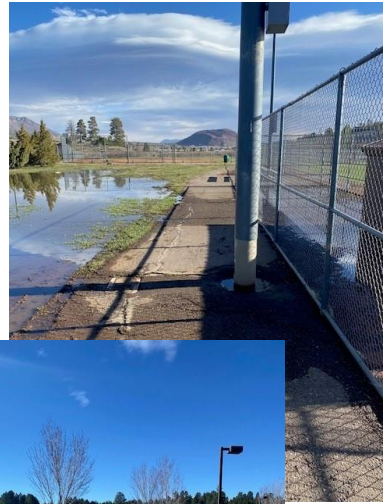


Recent Community Impacts

- Lower Lake Mary Levee
- Schultz Creek Basin
- Hwy 180 & Magdalena Road
- Fire Station #5 & Hwy 180 culvert damage
- Northwood Apts. & Stevanna Way (1 home - minor flooding damage)
- Southside (2 homes - minor flooding damages)
- Downtown, Cheshire, Country Club neighborhoods
- FUTS Trail segments, Continental & Foxglenn Park
- South Herald Ranch Road



Recent Community Impacts





Emergency Management Response

- Field site visits
 - Identifying what happened, how bad is it, who is responding, who is leading, what we need to do
- Talked with community members
- Response, support and coordination
- Assisted with press releases
- Media interviews
- Senior and Executive Leadership situational awareness updates





Water Services Response



- Active management of the Schultz Basins



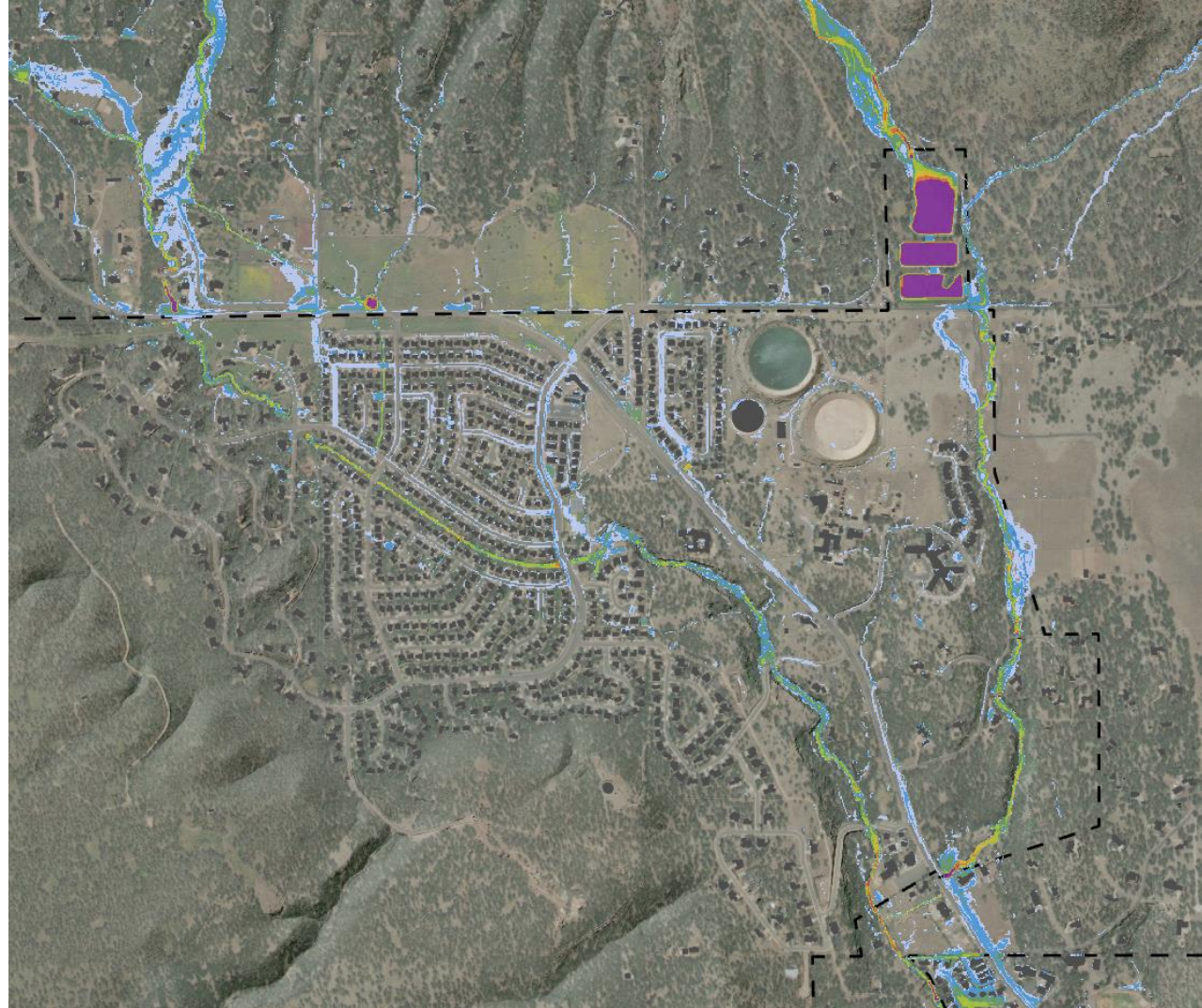
Monsoon Preparations





Flood modeling

- Spruce Wash
 - No change from February 2023 Council Presentation.
- Schultz Creek
 - Schultz Basins
 - Hwy 180
 - Mitigation still based on modeling without basins in place





Emergency alerts thresholds



MUSEUM FLOOD AREA EMERGENCY ALERT PROCESS

Coconino County will issue Emergency Notifications for flash flooding when the rain gauges installed on the Museum Fire burn area reach a certain level or threshold measured in inches of rainfall. When a specific level of rainfall or threshold is reached, then an Emergency Notification will be issued to certain areas as described below.

RAINFALL GAUGE THRESHOLD #1

When this threshold is reached, the Flood Director will alert the Emergency Operations Center, City and County officials and activate personnel to monitor drainages and water flows

RAINFALL THRESHOLDS ↓

Threshold #1
0.50-0.25 inches of rainfall in 15 minutes

Threshold #2
0.80-0.40 inches of rainfall in 15 minutes

Threshold #3
1.20-0.75 inches of rainfall in 15 minutes

RAINFALL GAUGE THRESHOLD #2

When this threshold is reached, the following happens:

- An Emergency Notification Alert Will **ONLY** Be Issued to Mt. Elden Estates neighborhood
- County and City Social Media will post this alert for Mt. Elden Estates

RAINFALL GAUGE THRESHOLD #3

When this threshold is reached, the following happens:

- An Emergency Notification Alert Will Be Issued to the entire Museum Flood Area (Mt. Elden Estates, Paradise, Grandview, & Sunnyside)
- All cell-phones in the area will get an Emergency Notice (similar to an Amber Alert)
- County and City Social Media will post this alert

WHAT TO DO IN A FLOOD EMERGENCY

- **DO NOT ENTER DRAINAGES!**
- **SHELTER IN PLACE!**
- If outdoors, get to High Ground or get into your home
- Know where your children & pets are
- Do not let children play in drainages
- If your home is flood impacted, call 928.213.2990
- Call 9-1-1 for EMERGENCIES ONLY

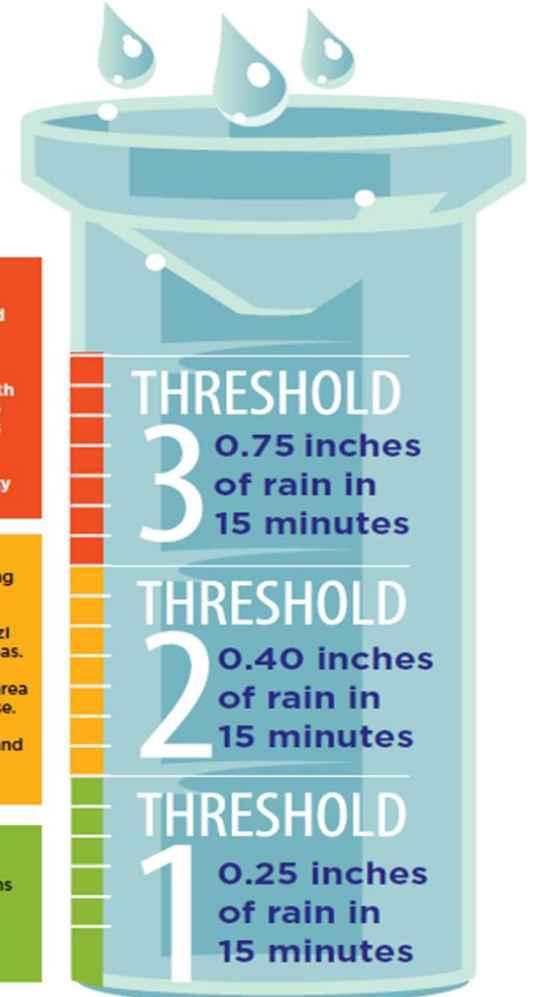
SIGN-UP FOR EMERGENCY NOTIFICATIONS



www.coconino.az.gov/museumfire/floodarea Call Center 928.213.2990

SCHULTZ/PIPELINE FLOOD AREA

Know Your Area's Rainfall Thresholds and Alert Notifications



Rainfall Gauge Threshold #3

When this threshold is reached, an Emergency Notification Alert will be issued to the entire downtown Flagstaff and the Creighton Estates, Coconino Estates, Cheshire, Anasazi Ridge, Coyote Springs, and Highway 180 areas. A text message with the alert (similar to an Amber Alert) will be sent to cell phones registered to addresses in these areas through the Emergency Notification database. The alert will be posted to Flood Control District and County social media channels and websites.

Rainfall Gauge Threshold #2

When this threshold is reached, the following occurs: An Emergency Notification Alert will be issued **ONLY** to the Creighton Estates, Coconino Estates, Cheshire, Anasazi Ridge, Coyote Springs, and Highway 180 areas. A text message with the alert will be sent to cell phones registered to addresses in this area through the Emergency Notification database. The alert will be posted to Flood Control District and County social media channels and websites.

Rainfall Gauge Threshold #1

When this threshold is reached, the Flood Director will alert the Emergency Operations Center, County officials, and activate personnel to monitor drainages and water flows. No emergency notification alerts will be sent.



Temporary mitigations

- Engineering assessments based on flood modeling maps
 - No changes are recommended at this time
 - 928-213-2102
- Mitigations are holding up well, only damaged sandbags need to be replaced
- Locations of pallets and dumpsters in neighborhoods
 - Based on demand, call 213-2102 for requests
- Sandbag locations (pre-filled and self-fill)
 - Aztec St (Thorpe Park near Frances Short Pond)
 - King St (North of the County Health building)
 - Schultz Y location is closed



Volunteer Days



- Volunteer days
 - Filling sandbags
 - May and June dates TBD
 - Watershed Clean-Up Series
 - Clearing stormwater infrastructure
 - Remove debris and/or vegetation
 - First Saturday May-August
 - Assistance for those with access or functional needs





Resident to-do

- Attend a community meeting for your area
 - Pipeline West/ Schultz Creek – May 8, 5:30pm
 - Museum/ Spruce Wash – May 15, 5:30pm
- Sign up for emergency alerts
- Review flood risk maps
- Review emergency alert thresholds
- Repair any damaged outward-facing sandbags (undamaged sandbags or interior sandbags do not need to be replaced)
- Purchase flood insurance

Discussion

