

# Post-Wildfire Flooding Update

March 28, 2023



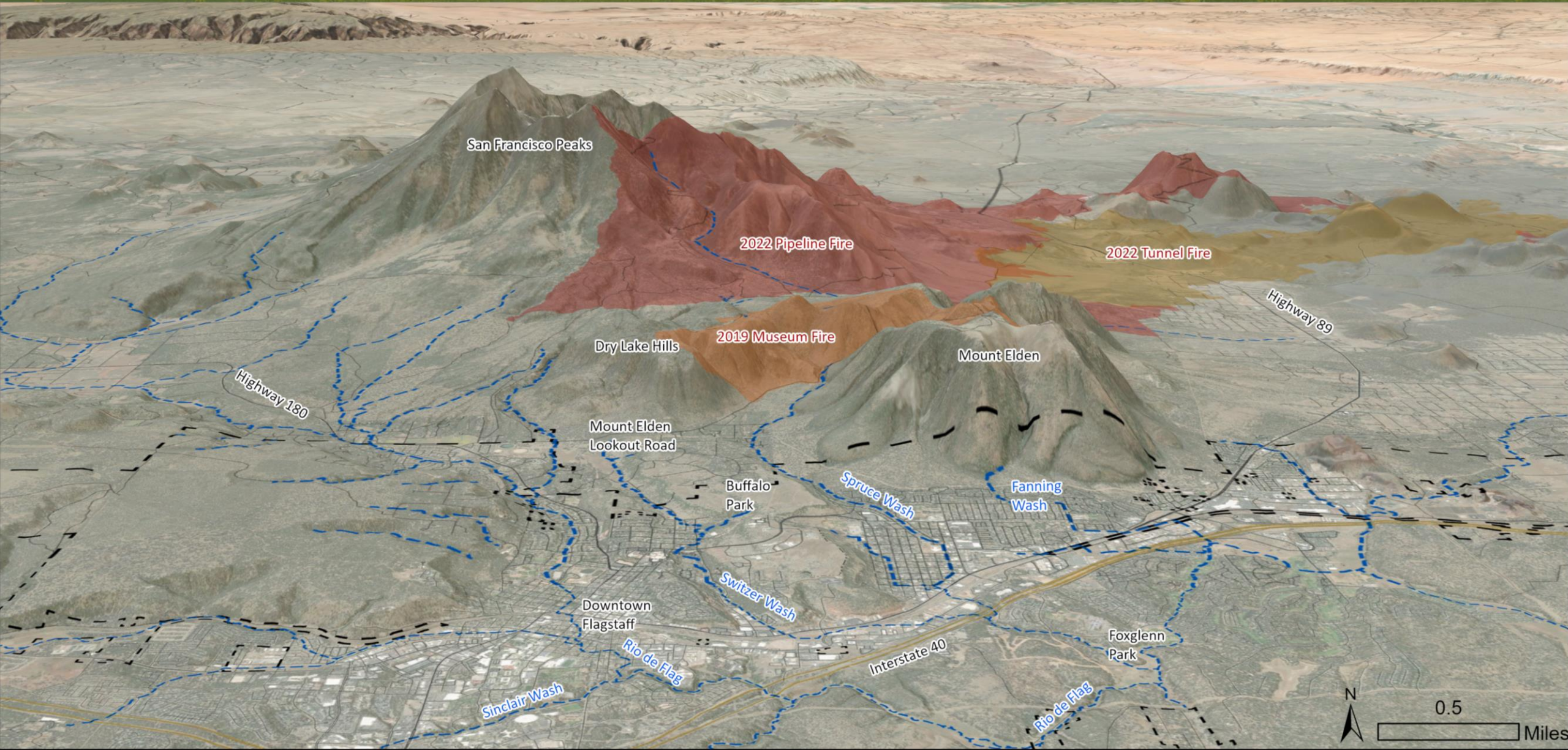


# Objectives for tonight

- Spruce Wash updates – Muesum
- Schultz Creek updates – Pipeline West
- Spring flood mitigation planning and update
- Snowmelt runoff update
- Council discussion and questions



# Overall map



San Francisco Peaks

2022 Pipeline Fire

2022 Tunnel Fire

2019 Museum Fire

Dry Lake Hills

Mount Elden

Highway 89

Highway 180

Mount Elden  
Lookout Road

Buffalo  
Park

Spruce Wash

Fanning  
Wash

Downtown  
Flagstaff

Switzer Wash

Interstate 40

Foxglenn  
Park

Sinclair Wash

Rio de Flag

Rio de Flag



0.5

Miles

# Spruce Wash

(2019 Museum Fire)





# Spruce Wash



- Hydrology and modeling indicates that an elevated flood risk remains.
- Bond projects (\$26M) are in design. Solid 30% progress expected by May.
- Technical Advisory Committee meets weekly and focus groups meet as needed.





# Suite of projects

## • Projects in Design



- Reconstruction of Grandview
- The Wedge Detention Basin
- Upsize Linda Vista Crossing
- Improve Cedar to Linda Vista Channel
- Upsize Cedar Crossing
- Improve Dortha to Arroyo Seco Channel
- Construct Permanent Inlet at Arroyo Seco Townhomes



## Key Flood Projects

1. *Grandview Drive Reconstruction*
2. *"The Wedge" Detention Basin*
3. *Linda Vista Drive Crossing*
4. *Cedar Avenue to Linda Vista Drive Channel*
5. *Cedar Avenue Crossing*
6. *Arroyo Seco Drive to Dortha Avenue Channel*
7. *Arroyo Seco Drive Inlet*



# Construction Manager At-Risk process

- A CMAR has been selected through a qualifications-based process. We are working through negotiations on a design services contract.
- Our CMAR will retain a public relations firm.
- We have retained four separate design consultants for the suite of projects.
- We have a survey consultant and geotech consultant in the field now completing work to support design.





# Project delivery schedule

- Guaranteed Maximum Price (GMP) #1 on July 3 – Grandview Utility Relocates – Construction will start post monsoon.
- Final plans for all projects completed by December 2023
- GMP #2 in February of 2024.
- Construction would start in the spring of 2024 and would continue through the fall of 2025.







# Park Way Basin



- County project has been awarded to the contractor.
- Construction equipment will be in the area through June.
- Utility relocates and tree work has now begun.
- City/County intergovernmental agreement for maintenance and operations is in development.
- Coconino County Flood Control District will provide direct communication updates.
- Natural Resources Conservation Service (NRCS) funding is secured and programmed for expense by June 30, 2023.



# Schultz Creek

(2022 Pipeline Fire)





# Schultz Creek project delivery

- Mitigating the flood threat for Stevanna Way, Coconino Estates, downtown, and Southside as a result of the Pipeline Fire.
  - Detention Basins – Seeing use this month!
  - Basins to Hwy 180 (NRCS EWP, \$679,000)
  - Hwy 180 Crossing (30% design, TAC)
  - Frances Short Pond (on hold due to snowpack)



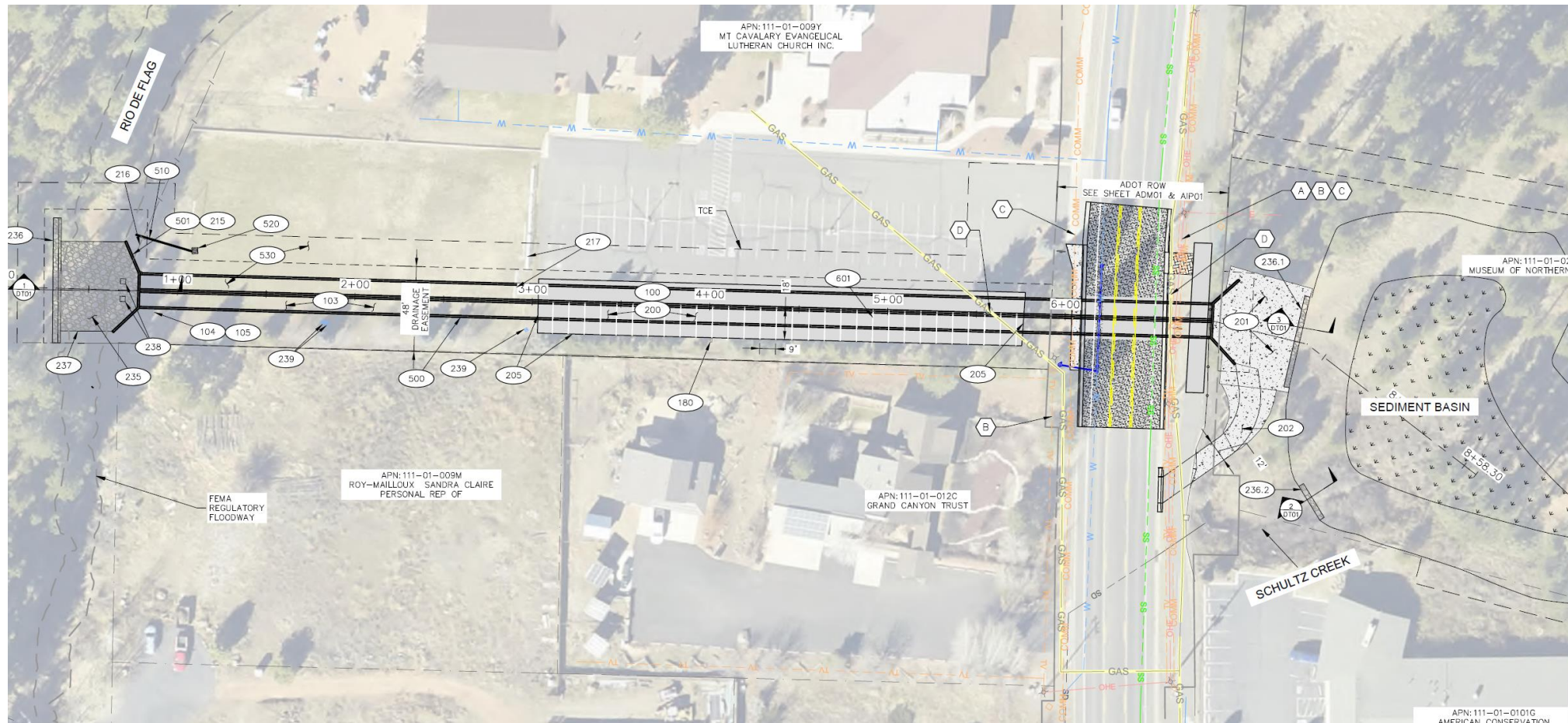
# Schultz Creek channel

- Emergency Watershed Protection (EWP) funded at \$630,118 plus \$49,000 for technical assistance, City match funded through new Stormwater rate or Dept. Of Forestry and Fire Management match.
- County project on Elden Lookout Road moving through design (Moving towards 90% design)
- Both projects are designed to reduce sediment and downstream debris impacts in Coconino Estates, downtown, and the Southside neighborhoods



# Schultz Creek at Hwy 180

- Moving quickly to 60% and 90% designs: full design and No-Adverse Impact Analysis by June
- Funding is an on-going challenge, hope is to avoid "Federalization"
- Property acquisition discussion on-going, some issue with a restrictive covenant.





# Frances Short Pond dredging

- On hold due to snowpack and current overflow condition
- Will assess in the coming month



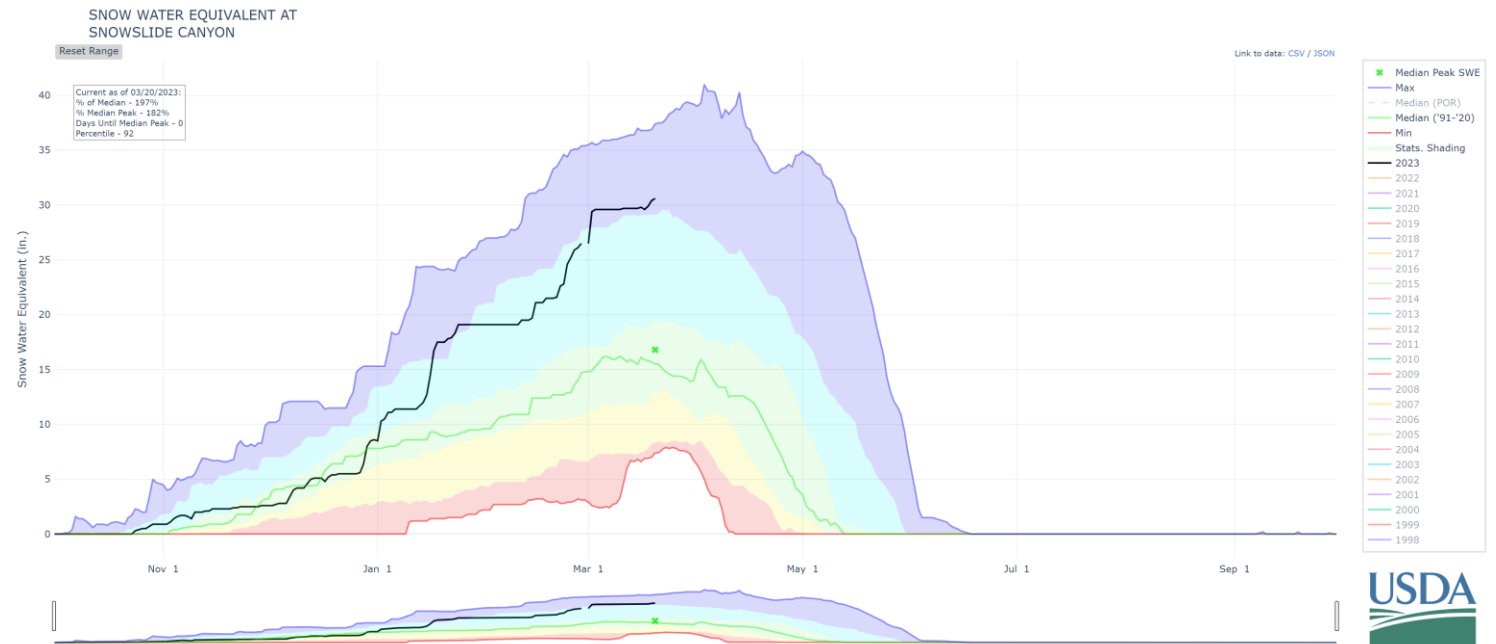
# Spring Runoff





# Spring runoff update

- Recent snowpack is near or at record levels (~ 32 inches of SWE on the Peaks as of 3/22).
- Stormwater continues to monitor stream gauges and NWS predictive modeling and will react with the appropriate Divisions as warranted.
- Flood impacts have been moderate (at a community level) but there is continued threat of rain-on-snow events and there have been properties damaged to date.
- Upper Lake Mary is full (good news!)







# Spring runoff update



Foxglenn Park,  
3/22/23



# Spring runoff



Schultz Creek looking downstream into the flood control basins, 3/19/23



# Neighborhood mitigations

- Short-term mitigations update in April
  - New flood risk models will be available for both flood corridors
  - Flood alert thresholds are being evaluated, may be adjusted due to Schultz Basins and seasonal rain data collected
- Mitigation funded by stormwater rate adjustment
  - Sandbags, barrier purchase
  - Engineering assessments for private property
  - Individual assistance for elderly and disabled
  - Call center support – 928-213-2102 Monday to Friday business hours

# Discussion

